



建煜風機 THE EXPERT IN BLOWERS CAM YORK BLOWER





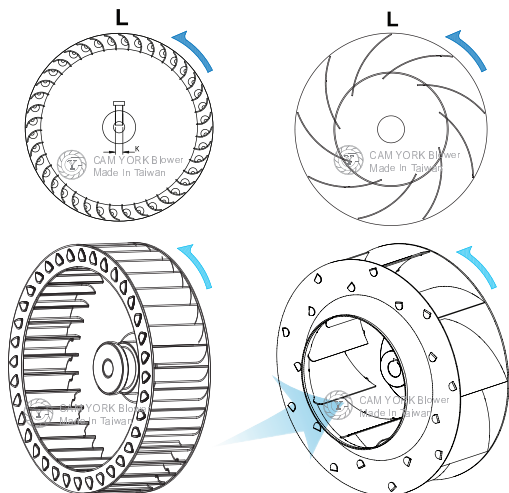
INDEX		01
Revolution Direction		02
Fan Performance Testing Lab.	建煜風機性能測試實驗室	03
Company Profile & Product Range		05
Products Overview		07
Centrifugal Strip Wheel Series		09
Centrifugal Tablock Wheel Series		10
CY Series (2 Pole)		11
CYT Series (Backward Curved Impeller)		14
P&PV Series (4 & 6 Pole)		17
M Series		22
DM Series		23
CYS Series		26
DC Series		27
CYB Series	    	28
EC直流變頻無刷風機	 	28-29
CYW 水洗式油煙處理機		30
CYV400 窗型 多翼式排風扇		31
CYV600 輕鋼架型 多翼式排風扇		32
Cross Flow Fan		33
High Pressure Blower		34

REVOLUTION DIRECTION

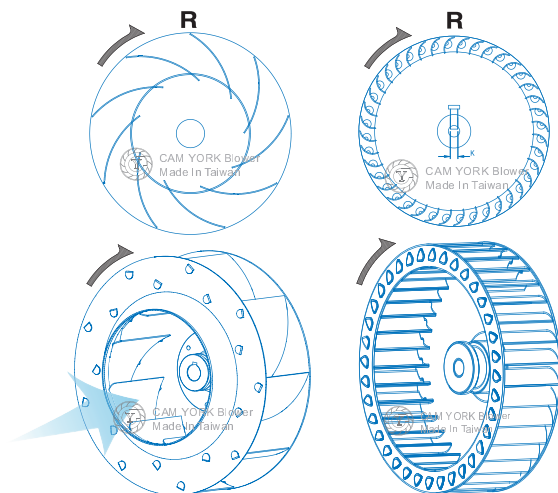
Fan Wheel Revolution Direction / 風輪轉向

- B. or L. or CCW
(Counter-Clockwise)
- B向 (左旋, 逆時針)

- A. or R. or CW
(Clockwise)
- A向 (右旋, 順時針)

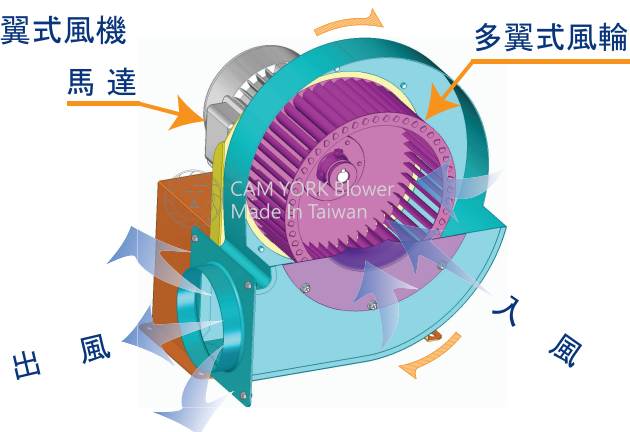


• Air intake
以入風口為準

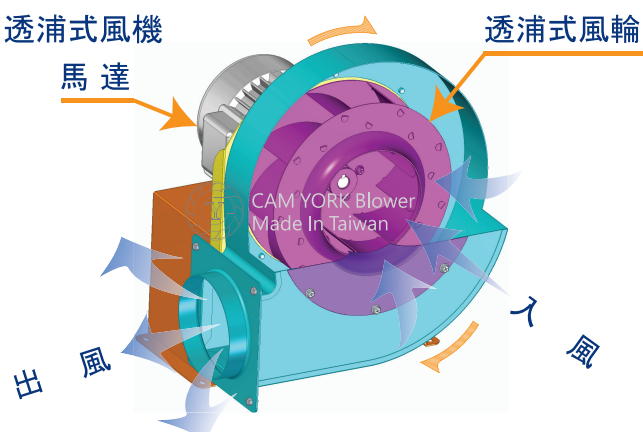


Blower Revolution Direction / 風機轉向

多翼式風機

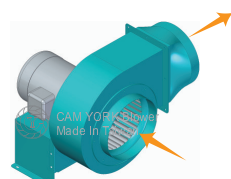


透浦式風機

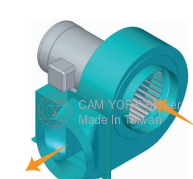


組立方向示意圖 (訂購時可選擇)

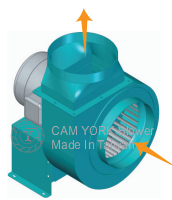
臥式風車 Foot Mounted



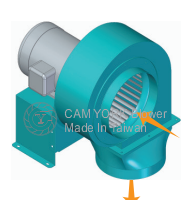
① A-Y (A向, 上平吹)



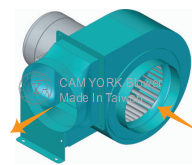
③ A-Q (A向, 下平吹)



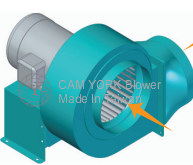
⑤ A-U (A向, 朝天吹)



⑦ A-D (A向, 朝地吹)



② B-Y (B向, 上平吹)



④ B-Q (B向, 下平吹)



⑥ B-U (B向, 朝天吹)



⑧ B-D (B向, 朝地吹)

立式風車 Flange Mounted

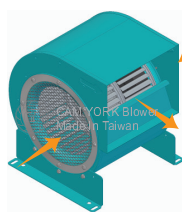


⑨ A-V (A向, 立式)

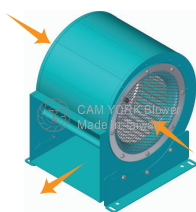


⑩ B-V (B向, 立式)

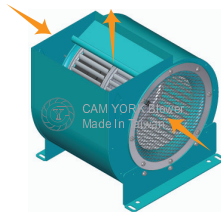
DM風車



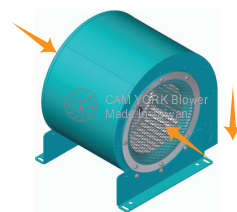
⑪ A-Y
(A向, DM風車上平吹)



⑫ A-Q
(A向, DM風車下平吹)



⑬ A-U
(A向, DM風車朝天吹)



⑭ A-D
(A向, DM風車朝地吹)



建煜風機性能測試實驗室

CAM YORK Blower Fan Performance Testing Laboratory



ISO 9001 : 2015



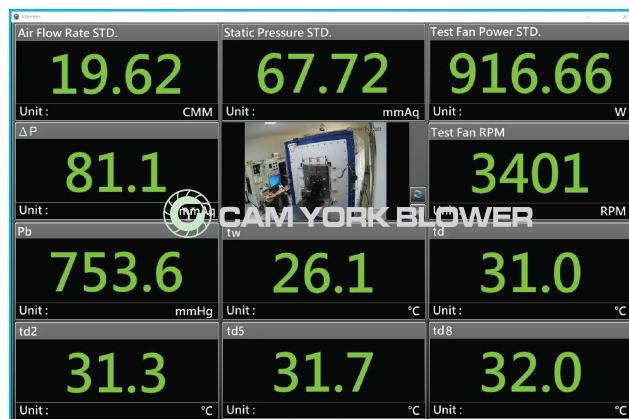
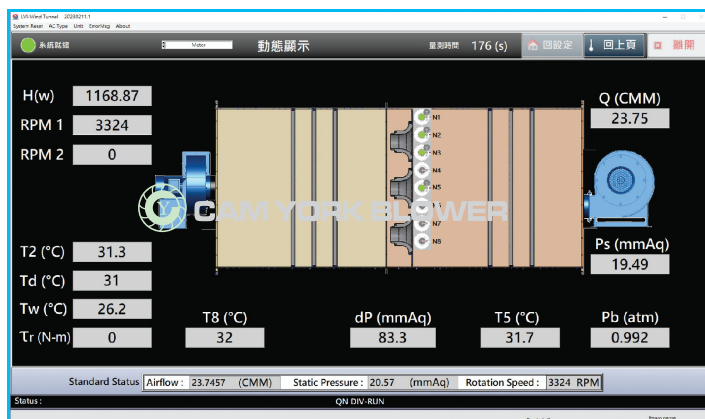
Testing Laboratory
4037

建煜風機性能測試實驗室於2021年建置，依據 **ISO/IEC 17025 : 2017** 國家標準，所有儀器設備符合要求之校驗，實驗室於2023年1月取得認證，為**TAF認證之風機實驗室**。建煜風機性能測試實驗室提供專業，精確的風機性能數據及曲線報告，另外經由實驗室測試可進行研發，分析，驗證及優化風機性能進而提供客戶更優異的高效率送風機。

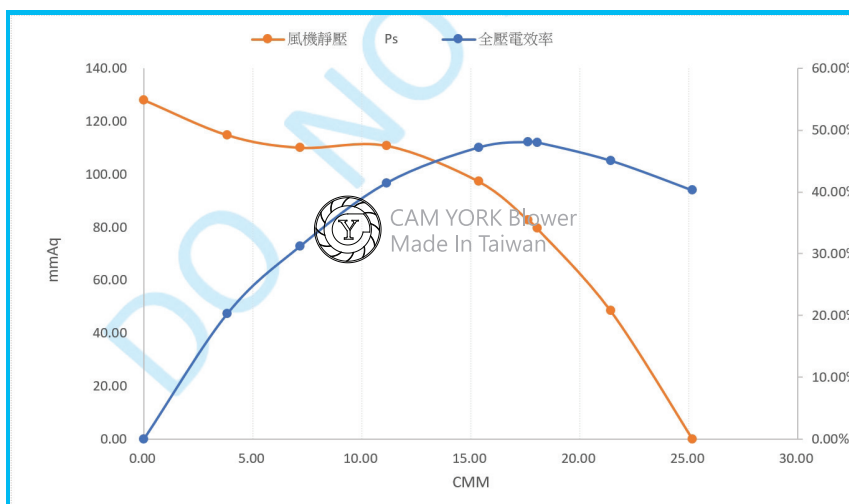
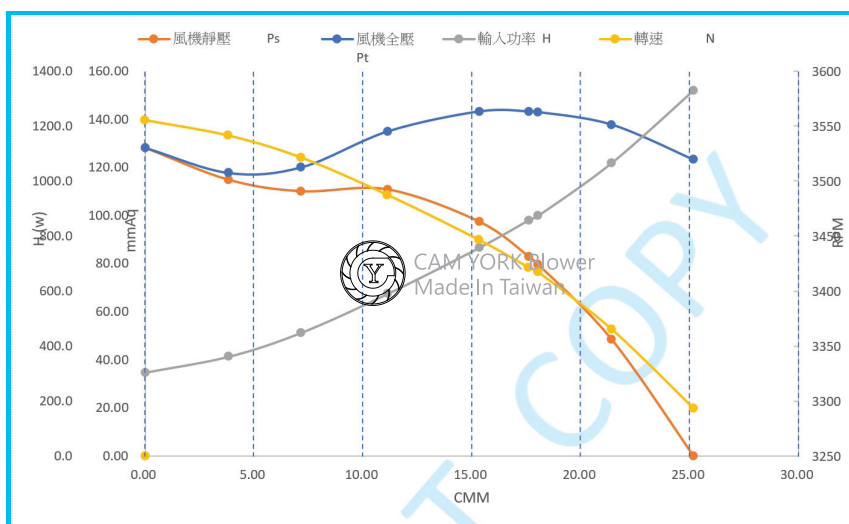
- 測試標準與方法：ANSI/AMCA210、ISO 5801、CNS 7778
- 測試範圍：風量：0.7~150m³/min (CMM)
靜壓：0~4980Pa (0~500 mmAq)
最大風機測試尺寸：
離心風機出風口面積:2500cm²
軸流風機出風口面積:1400cm²
- 測試電壓：專用的電源供應器提供所有國際電力需求的電壓與頻率。
- 測試說明：全自動量測，電腦利用風洞內噴嘴的變化與組合自動取點，取得風量與靜壓數據，並轉換成標準狀態，產出風機性能測試報告及風機效率。

• 實驗室設備：





• 風機性能曲線：



COMPANY PROFILE & PRODUCT RANGE

Company Profile

Cam York Industrial Co., Ltd., established in 1972, is a professional manufacturer of centrifugal blowers (also known as multi-blade blowers or Sirocco fans) and impellers (Fan Wheels). Factory area covers an area of approximately 7200 square meter.

Integrity, responsibility as well as professional expertise in producing superior products is our creed, owing to customers' satisfaction and recognition in our quality products.

Due to years experience in blower industries, we manufacture a wide selection of sirocco fan with high quality which can be applied on HVAC system, machinery, air shower, clean room, inflatable products, etc for air suction and discharging. We also got an authentication through the international certification of ISO 9001:2015 Quality assurance.

All developed fans and impellers also have to pass our strict performance test. The performance test facility is corresponding to AMCA (Air Movement and Control Association) standard. We also adopt motor with UL approval to apply on our blowers. Therefore, we assure a high quality performance and low vibration for our product range.

In addition to our standard models, we also welcome customers' special design and specification. In the oversea trading, we sell our products worldwide. So far, we have exported to China, Thailand, Malaysia, Vietnam, United Kingdom, Sweden, Japan, Singapore, USA, Syria, Poland, etc.

With more than 50 years experience, Cam York Industrial Co., Ltd. can produce a high quality products at most competitive price. To be reliable and responsible are always our creeds for serving our customers.

Characteristics

- The performance test facility is corresponding to AMCA (Air Movement and Control Association) standard.
- 100% Made in Taiwan.
- Computerized dynamic balancing ensure very low vibration during operation.
- Customized requirement is available, upon request.

Product Range

A. Blower

Series	Characteristics	Application
CY Series	• Single inlet with single fan wheel. • 2 Pole, high speed rotation, high air pressure, high air flow.	HVAC system for air suction and discharging. Baking machine, packing machine, clean room, kitchen hood, air shower, humidifier, dehumidifier, clean bench, hand dryer, boiler, coffee roaster machine.
DM Series	• Double inlet with dual wheel. • High air flow. • Speed controlled device provides different options which makes fan operation more efficiently.	
M Series	Double fan, double outlet type.	
P / PV Series	4 Pole / 6 Pole, with Foot Mounted motor / Flange Mounted motor.	
CYB Series	BOX type, high pressure, portable, colorful, outdoor design.	INFLATABLE industry, toy castle, outdoor Ads.
CYT Series	Backward curved impeller, high pressure.	Powder suction, printing machine.
CYV Series	Exhaust fan type design, 3 speed control, remote control. Lower noise. Easier installation.	Indoor ventilation

B. Fan Wheel

Series	Characteristics	Application
Centrifugal Strip Wheel Centrifugal Tablock Wheel	• Impeller is designed in single wheel and dual wheel • Material: steel, galvanized steel, stainless steel, aluminum alloy. • Rotating direction: clockwise, counter clockwise.	Mainly apply on blower equipment for air suction and discharging.
FFU	High pressure, lower noise, aluminum material.	Clean Room - FFU (fan filter unit)
Turbo / Backward type	Backward curved type	For backward curved type blower.

Application

Ventilation, Air conditioning, Dryer, Dehumidifier, Inflatable products, etc.

公司介紹

建煜工業股份有限公司成立於1972年，為多翼式抽送風機、風輪之專業研發製造商。除了產業界長期使用外，近年來更廣泛運用於無塵室、各式空調系統、各式精密烘箱、烤爐等製程設備之運用。

行銷之國家遍及歐、美、日、澳及東南亞等30餘國；本公司擁有符合美國AMCA標準之風機性能測試機，研發之送風機均經過嚴格的風洞測試，風輪通過電子平衡機檢驗測試；高品質、壽命長，產品適用於空調、乾燥、散熱、冷暖房送風排氣等。

自創立以來，本公司一直秉持著專業化設計生產、行銷，以追求最高品質為自我要求，並以達到客戶100%滿意度為最終目標；並已領先業界通過 ISO 9001:2015 國際品保認證。

展望未來，除了積極提昇技術，更堅持以往的品質信用和口碑，永續經營『品質第一、服務至上、持續改善、創新成長』的品質政策，與客戶共同合作開發新契機。

產品特色

- 符合AMCA標準風洞實驗室所設計，製造更佳效能之風機。
- 全機台灣生產製造。
- 風輪100%經電子平衡機校正平衡，震幅，震動最小，運轉平穩，噪音小。
- 可依客戶特殊需求作變更設計。

產品介紹

A. 送風機

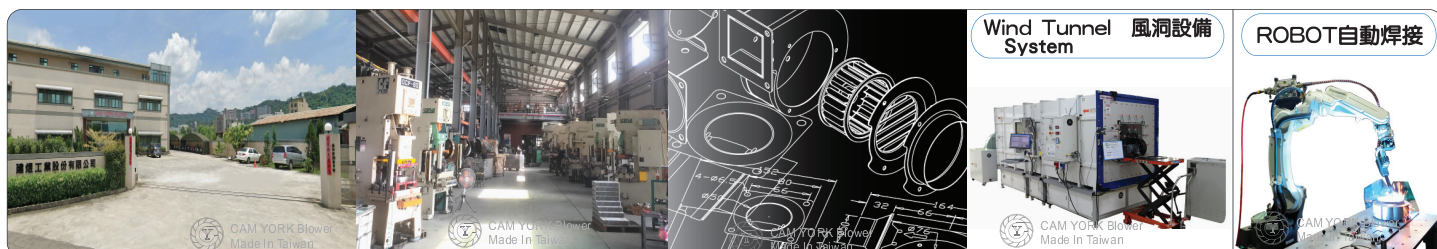
系列	特性	應用
CY 系列	• 單入風口，單風輪設計。 • 2極設計，轉速快，風壓大，風量大。	無塵室,機械,散熱,排氣,廚房吸油煙機,熱循環,烤箱,包裝機,Air Shower,空調系統,機器乾燥,抽風,除濕,烘手機,操作台,鍋爐,,咖啡烘豆.
DM 系列	• 雙入風口，雙風輪設計。 • 大風量。 • 速度控制裝置可以提供不同的速度，使整體運轉更有效率。	
M 系列	雙風輪、雙出風口設計。	
P / PV系列	4極 / 6極馬達，搭配臥式馬達 / 立式馬達 設計。	
CYT 系列	透浦式風輪設計，高靜壓,效率高。	抽送粉塵，塑膠粒，印刷機，壓損高的管路環境
CYV 系列	多翼式排風扇設計，可接風管，方便安裝，三段調速，無線遙控	神明廳，佛堂，吸煙室等室內場所換氣
CYB 系列	箱型風機設計，攜帶方便，適用於戶外。	充氣拱門，造型玩偶，戶外廣告，氣墊跳床。

B. 風輪

系列	特性	應用
捲齒式 片齒式	• 單風輪，雙風輪設計。 • 材質: 鐵, 鍍鋅鋼, 不鏽鋼, 鋁。 • 轉向: 順時針, 逆時針。	多翼式送風機空氣調節之應用。
FFU	高靜壓，低噪音，鋁材質，FFU 適用。	無塵室。
透浦式	後傾式設計，鐵材質，高靜壓，適用高轉速。	後傾式風機之應用。

產品應用

- 通風設備，冷空調，熱空調，乾燥設備，除濕設備，空氣循環，充氣造型氣墊。



PRODUCTS OVERVIEW / 產品總覽

CY series (2 pole)



CY063
13W (P11)



CY074
25W (P11)



CY076
25W (P11)



CY100
45W (P11)



CY120
1/8 HP (P12)



CY125
200W (P12)



CY127
50W (P12)



CY150
1/2 HP (P12)



CY180
1 HP (P13)



CY180AN
1/2 HP (P13)



CY200
2 HP, 3HP (P13)



CY200BK
620W(2P), 100W(4P) (P13)

CYT series (2 pole)



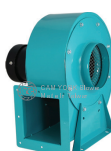
CYT150
1/8 HP (P14)



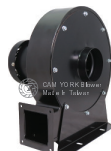
CYT180
1/8HP (P14)



CYT210
200W (P14)



CYT250
1/2 HP (P14)



CYT275
1/2 HP (P15)



CYT285
1 HP (P15)



CYST300
1 HP (P15)



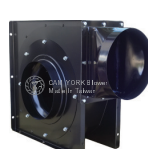
CYT325
1 HP (P15)



CYT320
2 HP (P16)



CYT350
3 HP (P16)



CYST410-4P
1 HP (P16)



CYST450-4P
2 HP (P16)

P&PV series (4 / 6 pole)



CY125P
30W (P17)



CY150P
1/10 HP (P17)



CY180AK
90W (P17)



CY190P
1/4 HP (P18)



CY190PV
1/4 HP (P18)



CY200P
1/3 HP (P18)



CY210P
1/4 HP (P18)



P



PV

CY230P/CY230PV
1/2HP(4P), 1/4HP(6P) (P19)

CY270P/CY270PV
1 HP(4P), 1/2HP(6P) (P19)

CY310P/CY310PV
2HP, 3HP(4P), 1HP(6P) (P20)

CY350P
5HP(4P), 2HP(6P) (P20)

CY380P
7.5HP(4P), 3HP(6P)
2HP(8P) (P21)

M series (2 pole)



CY076M
45W (P22)



CY100M
50W (P22)



CY120M
200W (P22)



CY125M
1/2 HP (P22)



CY150M
3/4HP (P23)



CY180M
1.5HP (P23)

DM series (4 / 6 pole)



CY125DM 70W (4P) (P23) CY150DM 110W (4P) (P23)

CY200DM 420W (4P) (P24)



CY190DM 420W (4P) (P24) CY230DM 550W (4P), 400W (6P) (P24)

CY270DM 3/4 HP(6P) (P25)



CY178DM 75W(4P) (P24)



CY275DM 1/2 HP(6P) (P25) CY280DM 3/4 HP(6P) (P25)

CY310DM 700W(6P) (P25) CY350DM 2 HP(6P) (P25)

CYB series (2 pole) (P28)



CYB120 1/8 HP



CYB125 200W



CYB127 50W



CYB180 1/2 HP

CYS series (2 / 4 pole)



CYS190 / CYS193 / CYS195 1/2HP(2P) / 75W(4P) / 1/4HP(4P) (P26)

DC Brushless series



CY076DC (P27)



CY100DC (P27)



CY120EC (P27)



CY120DC (P27)



CY125DC (P28)

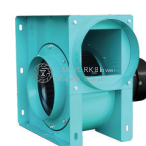


CY100DM EC (P28)

EC Brushless EC直流變頻無刷風機



CY180AEC (P28)



CYS232AEC (P29)



CYST300AEC (P29)



CYT325AEC (P29)



CYST410AEC (P29)

CYV400/CYV600 多翼式排風扇



CYV400 窗型 (P31)



CYV600 輕鋼架型 (P32)

CYW250水洗式油煙處理機

(P30)



Cross flow fan Series (P33)



High Pressure Series (P34)

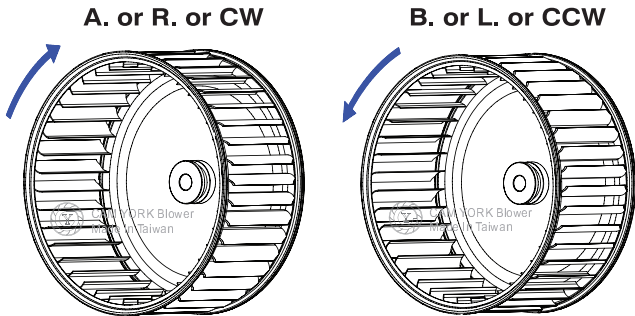
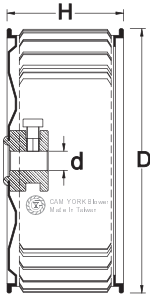


CENTRIFUGAL STRIP WHEEL Series

Centrifugal Strip Wheel Series / 捲齒系列

Material / 材質:

- A : steel w/ painting - 鐵
- G : galvanized - 鍍鋅板
- B : aluminum - 鋁
- S : stainless steel - 不鏽鋼



A. or R. or CW

B. or L. or CCW



Single Wheel

MULTI-BLADE IMPELLER						
SIZE			BORE	KEYWAY	ROTATION R (CW), L (CCW)	REMARK
(D) (mm)	(D) (inch)	(H) (mm)	(d) (mm)	(K) (mm)		
76	3	40	6/8		R,L	
90	3.5	56	6/8		R,L	
105	4	56	8		R,L	
130	5	56/65/76	8/11/14		R,L	
145	5.6	76	12/12.7/14		R,L	
158	6	56/76/97	11/14		R,L	
178	7	76/97	14		R,L	
190	7.5	97	14		R,L	
230	9	118	14/16		R,L	
270	10.5	136	19/24	6x3, 8x4	R,L	
310	12	156	24/28	8x4	R,L	



A. or R. or CW

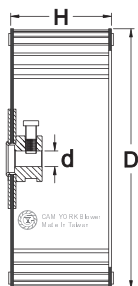
Dual Wheel

MULTI-BLADE IMPELLER IN DUAL WHEELS						
SIZE			BORE	KEYWAY	ROTATION R (CW), L (CCW)	REMARK
(D) (mm)	(D) (inch)	(H) (mm)	(d) (mm)	(K) (mm)		
130	5	152	8		R,L	
145	5.7	200/300	12/12.7		R,L	
158	6	152/200	12/14		R,L	
190	7.5	200	14		R,L	
230	9	236	14/16		R,L	
270	10.5	274	14/19		R,L	
310	12	310	24	8x4	R,L	

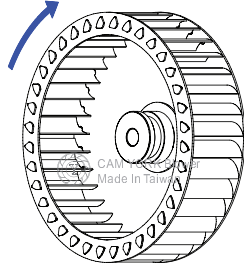
Centrifugal Tablock Wheel Series / 片齒系列

Material / 材質:

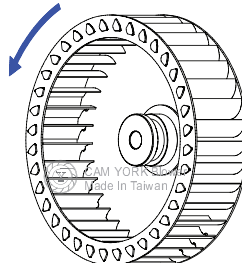
- A** : steel w / painting - 鐵
G : galvanized - 鍍鋅板
B : aluminum - 鋁
S : stainless steel - 不鏽鋼



A. or R. or CW



B. or L. or CCW



A. or R. or CW



B. or L. or CCW



Single Wheel

MULTI-BLADE IMPELLER						
SIZE			BORE (d) (mm)	KEYWAY (K) (mm)	ROTATION R (CW), L (CCW)	REMARK
(D) (mm)	(D) (inch)	(H) (mm)				
127	5	—	—	—	R,L	
152	6	—	—	—	R,L	
170	6.6	—	—	—	R,L	
178	7	—	—	—	R,L	
190	7.5	—	—	—	R,L	
199	8	—	—	—	R,L	
230	9	—	—	—	R,L	
248	9.6	—	—	—	R,L	
270	10.5	—	—	—	R,L	
280	11	—	—	—	R,L	
295	11.6	—	—	—	R,L	
305	12	—	—	—	R,L	
330	13	—	—	—	R,L	
356	14	—	—	—	R,L	
380	15	—	—	—	R,L	
456	18	—	—	—	R,L	
533	21	—	—	—	R,L	
610	24	—	—	—	R,L	
685	27	—	—	—	R,L	
763	30	—	—	—	R,L	

- 孔徑鍵槽各異，以IEC為準，可依客戶規格訂作

Dual Wheel

- Above TABLOCK MULTI-BLADE IMPELLERS can be conjoined as double-inlet type (Hx2) indicated as C * B-M impllers
- 片齒雙口M系列可由單一風輪組合而成，高度為單口的兩倍

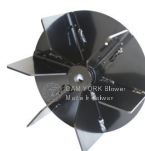
Other Wheel Series



FFU



Backward curved type
後傾透浦式



A. or R. or CW



Strong Type
強力型



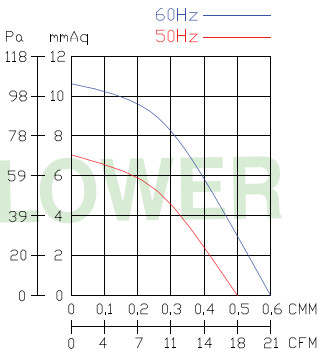
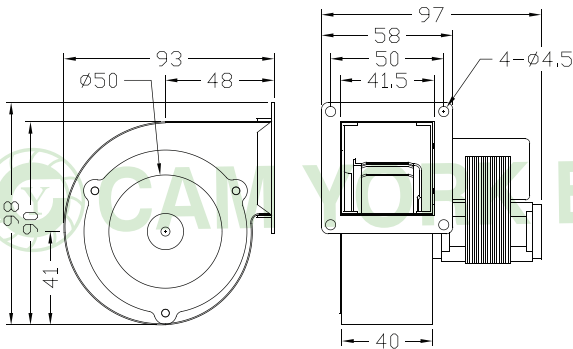
B. or L. or CCW



一體成型

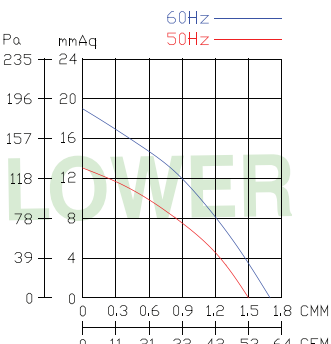
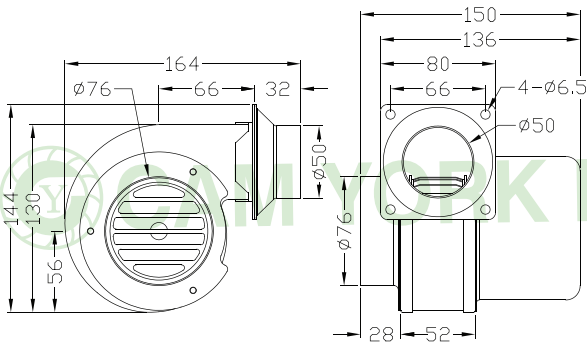
CY Series (2 Pole)

CY063



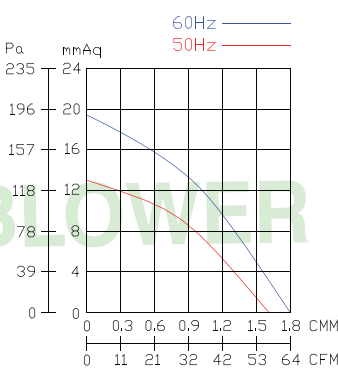
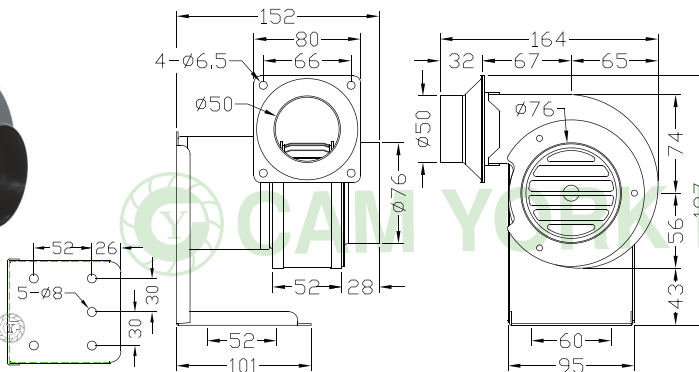
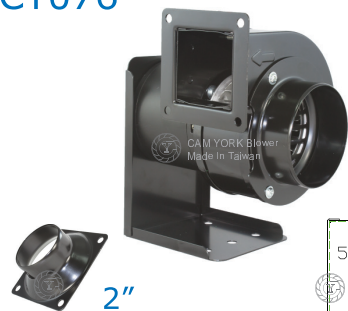
• 敞極馬達 / Shaded pole motor

CY074

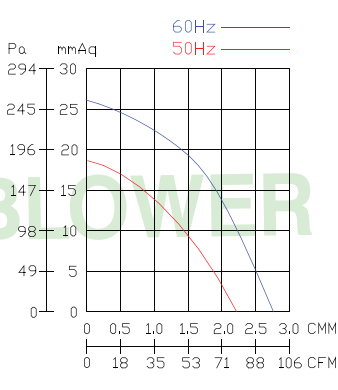
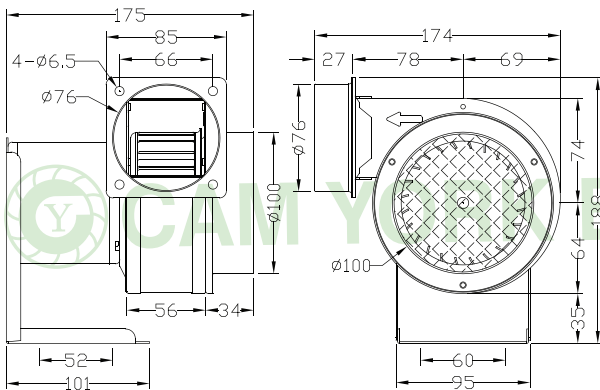


• 敞極馬達 / Shaded pole motor

CY076

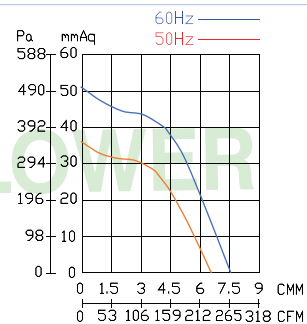
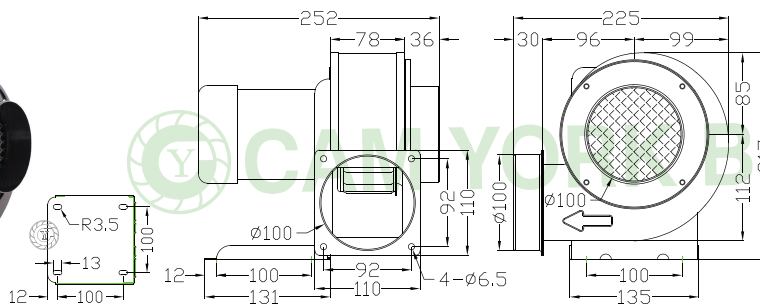


CY100

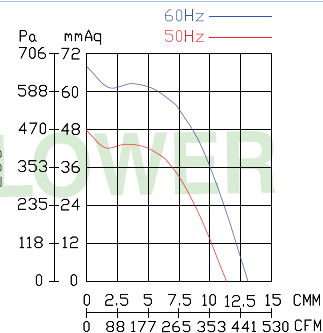
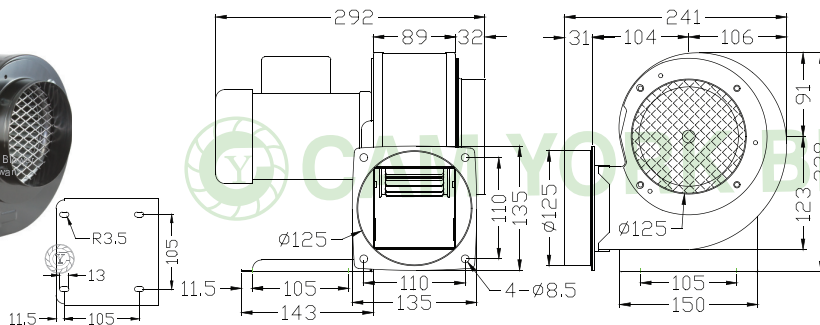


型號	電壓	頻率	相數	極數	電流	馬力	轉速	最大風量			最大靜壓			重量
Model	Rated Voltage	Frequency	Phase	Pole	Current	Power	Speed	Max. Air Flow			Max. Pressure			Weight
	V	Hz	Ø	P	A	Watt / HP	R.P.M.	CMM	CMH	CFM	mmAq	inchAq	Pa	KG
CY063	110/220	50	1	2	0.25 / 0.10	13 W	2730	0.5	30	18	7	0.28	69	0.6
		60			0.20 / 0.10		3200	0.6	36	21	10.5	0.41	103	
CY074	110/220	50	1	2	0.86 / 0.34	25 W	2760	1.5	90	53	13	0.51	127	1.6
		60			0.68 / 0.30		3200	1.7	102	60	19	0.75	186	
CY076	110/220	50	1	2	0.35 / 0.17	25 W	2860	1.6	96	56	13	0.51	127	2.0
		60			0.28 / 0.14		3300	1.8	108	64	19	0.75	186	
CY100	110/220	50	1	2	0.60 / 0.30	45 W	2870	2.2	132	78	18	0.71	177	2.4
		60			0.55 / 0.30		3350	2.7	162	95	26	1.02	255	

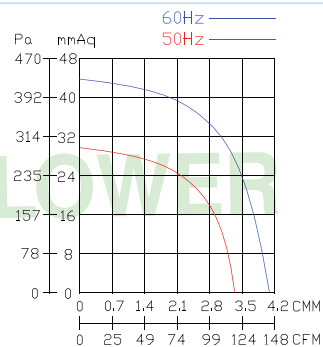
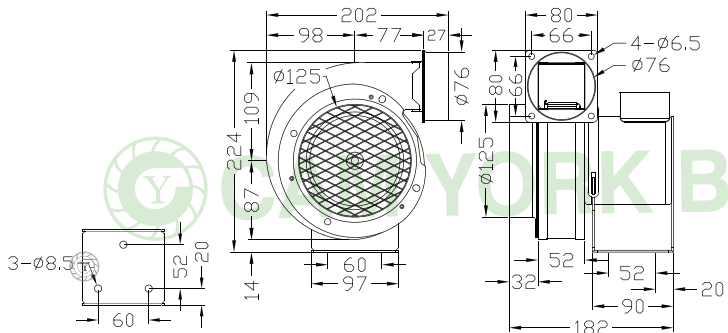
CY120



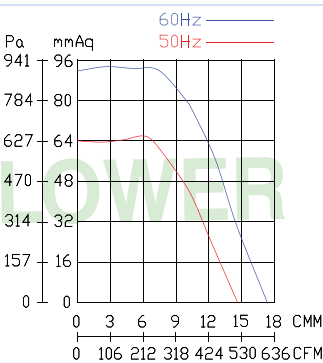
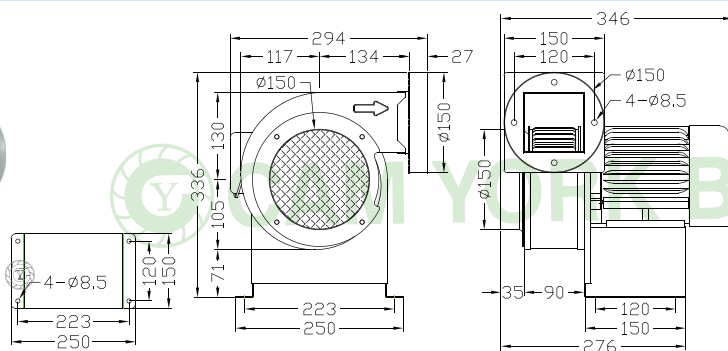
CY125



CY127



CY150

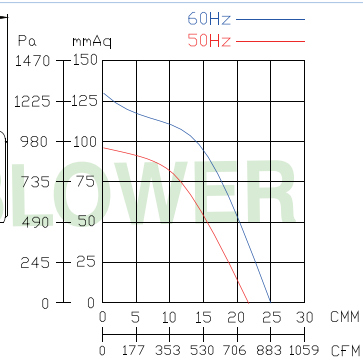
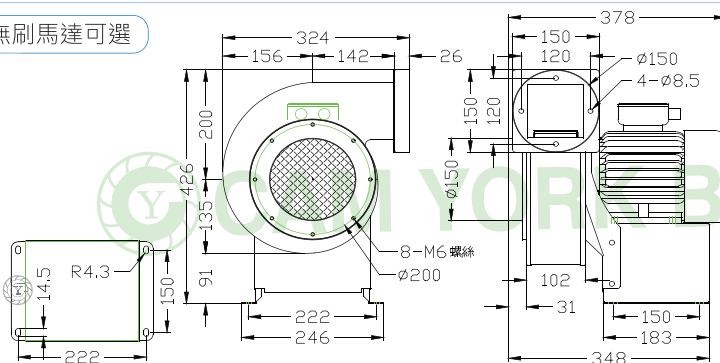


型號	電壓	頻率	相數	極數	電流	馬力	轉速	最大風量			最大靜壓			重量
Model	Rated Voltage	Frequency	Phase	Pole	Current	Power	Speed	Max. Air Flow			Max. Pressure			Weight
	V	Hz	Ø	P	A	Watt / HP	R.P.M.	CMM	CMH	CFM	mmAq	inchAq	Pa	KG
CY120	110/220	50	1	2	1.2 / 0.6	1/8 HP	2850	6.6	396	233	36	1.42	353	4.3
		60			1.4 / 0.72		3330	7.6	456	268	51	2.01	500	
	220/380	50	3		0.5 / 0.3		2850	6.6	396	233	36	1.42	353	
		60			0.55 / 0.32		3330	7.6	456	268	51	2.01	500	
CY125	110/220	50	1	2	2.6 / 1.3	200 W	2850	11.4	684	402	48	1.89	471	6.1
		60			3.3 / 1.65		3300	13.1	786	462	68	2.68	667	
	220/380	50	3		0.8 / 0.46		2810	11.2	672	395	48	1.89	471	
		60			1.0 / 0.58		3200	12.8	768	452	68	2.68	667	
CY127	110/220	50	1	2	1 / 0.5	50 W	2840	3.3	198	116	30.5	1.20	299	3.7
		60			1 / 0.5		3320	4	240	141	44	1.73	432	
	220/380	50	3		0.45 / 0.3		2840	3.3	198	116	30.5	1.20	299	
		60			0.45 / 0.3		3400	4	240	141	44	1.73	432	
CY150	110/220	50	1	2	5.8 / 2.9	1/2 HP	2920	14.7	882	519	64	2.52	628	16
		60			6.4 / 3.2		3430	17.4	1044	614	92	3.62	902	
	220/380	50	3		1.8 / 1.0		2920	14.7	882	519	64	2.52	628	15
		60			2.0 / 1.2		3430	17.4	1044	614	92	3.62	902	

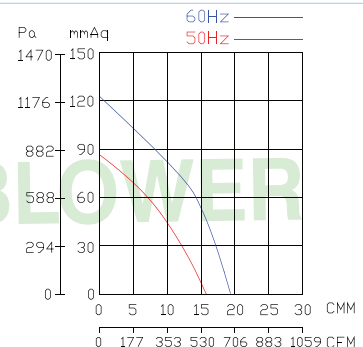
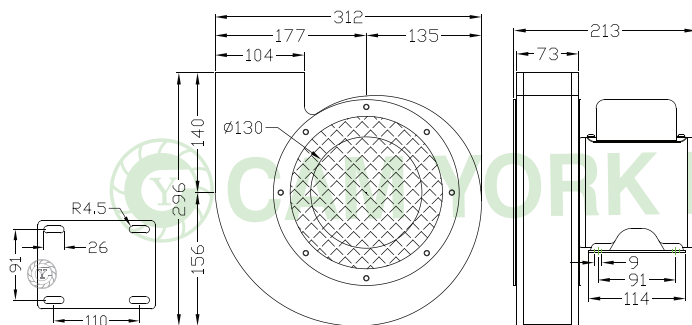
CY Series (2 Pole)

CY180

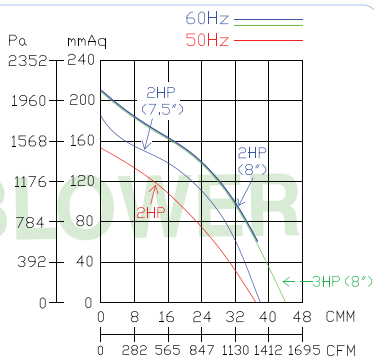
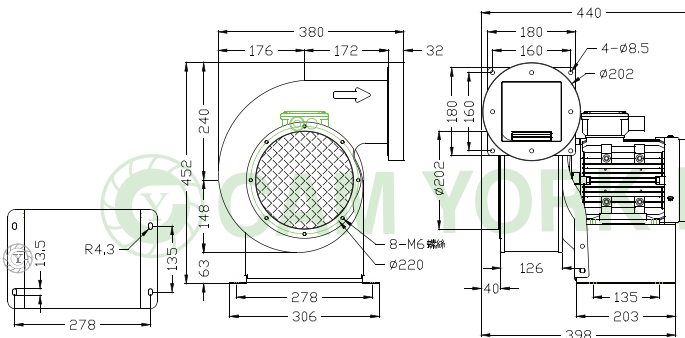
有DC無刷馬達可選



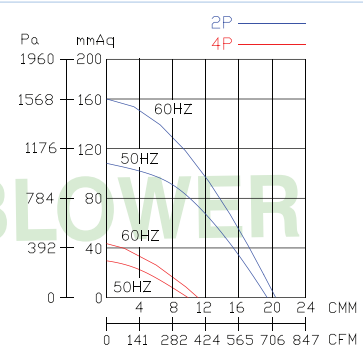
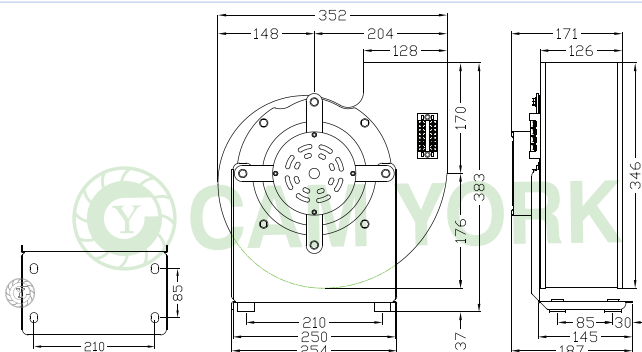
CY180AN



CY200



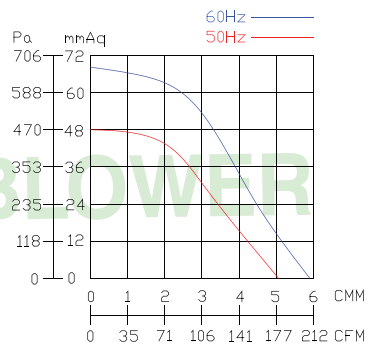
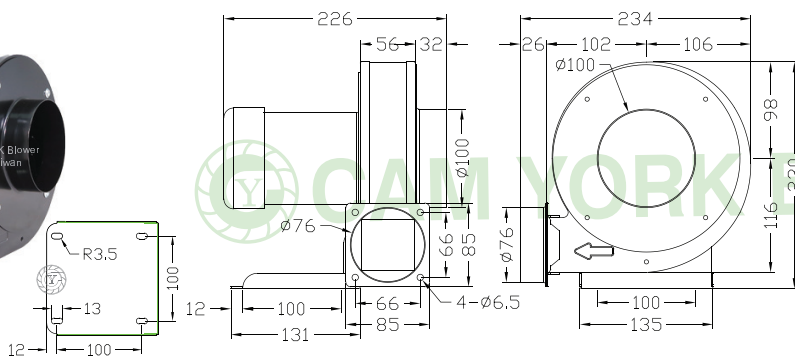
CY200BK



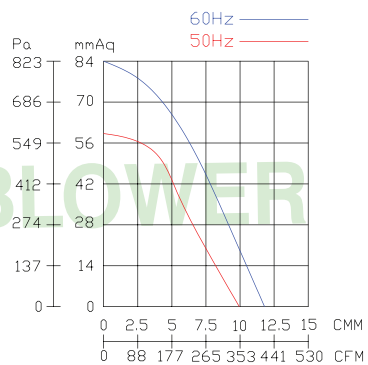
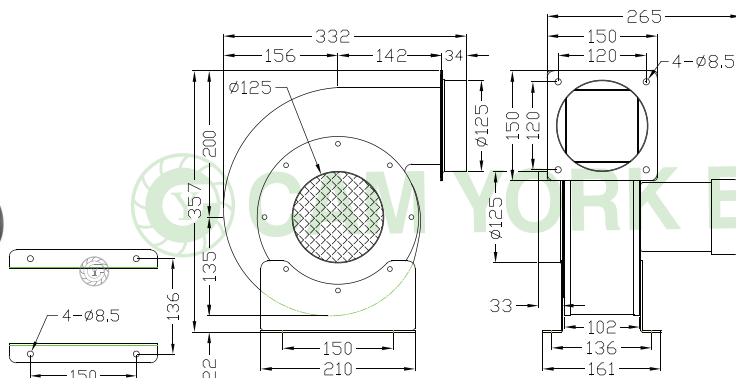
型號	電壓	頻率	相數	極數	電流	馬力	轉速	最大風量			最大靜壓			重量
Model	Rated Voltage	Frequency	Phase	Pole	Current	Power	Speed	Max. Air Flow			Max. Pressure			Weight
	V	Hz	Ø	P	A	Watt / HP	R.P.M.	CMM	CMH	CFM	mmAq	inchAq	Pa	KG
CY180	110/220	50	1	2	8.2 / 4.2	1 HP	2800	21.5	1290	759	92	3.62	902	22
		60			11.4 / 5.8		3300	25	1500	883	130	5.12	1275	
	220/380	50	3	2	3.4 / 2		2800	21.5	1290	759	92	3.62	902	20.5
		60			4 / 2.3		3300	25	1500	883	130	5.12	1275	
CY180AN	110/220	50	1	2	6.1 / 3.1	1/2 HP	2850	16	960	565	85	3.35	834	10.5
		60			8.7 / 4.3		3250	18.3	1098	646	122.5	4.82	1201	
CY200	220	50	1	2	8	2 HP	2850	37	2220	1306	152	5.98	1491	31
		60			10		3380	44	2640	1553	214	8.43	2099	
		50			6.1 / 3.3		2850	37	2220	1306	152	5.98	1491	
		60			6.8 / 4.2		3380	44	2640	1553	214	8.43	2099	
	220/380	50	3	2	5.3 / 3	2HP-7.5"	3450	38	2280	1341	185	7.28	1814	30
		60			8 / 4.7	3 HP	3480	44	2640	1553	214	8.43	2099	
		50			2.7 / 1.7	620 W	2700	19	1140	671	113	4.45	1108	11.6
		60			4.0 / 2.4		3000	21.2	1272	748	160	6.30	1569	
CY200BK	220/380	50	3	2	0.8 / 0.45	100 W	1400	9.8	588	346	30.7	1.21	301	
		60			0.8 / 0.47		1640	11.5	690	406	42	1.65	412	
		50		4										
		60												

CYT Series (Backward Curved Impeller) 後傾式

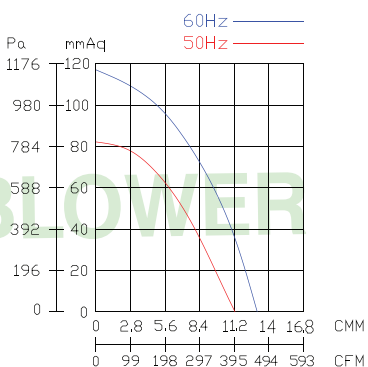
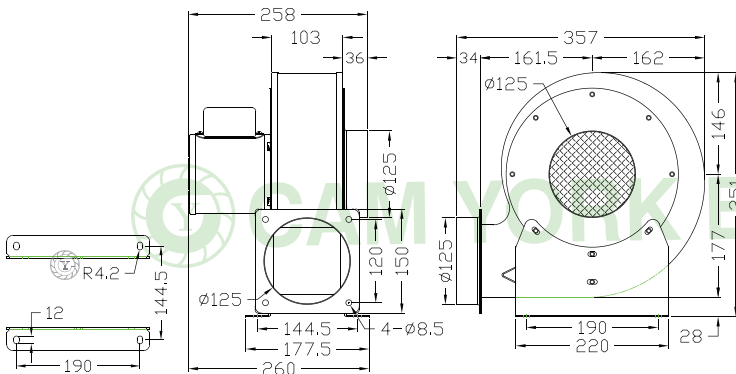
CYT150



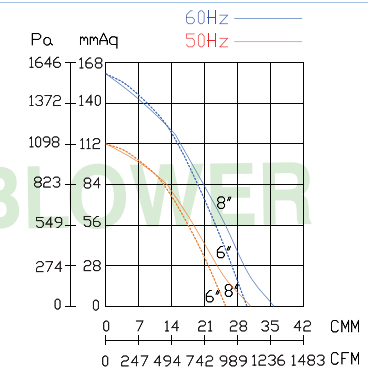
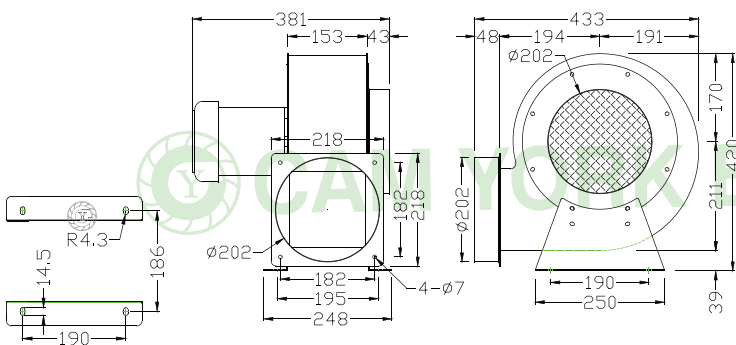
CYT180



CYT210

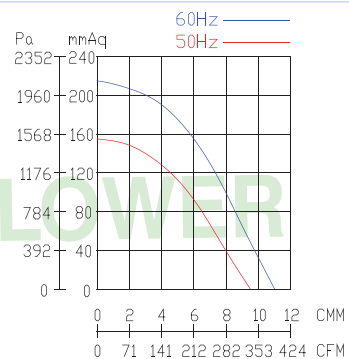
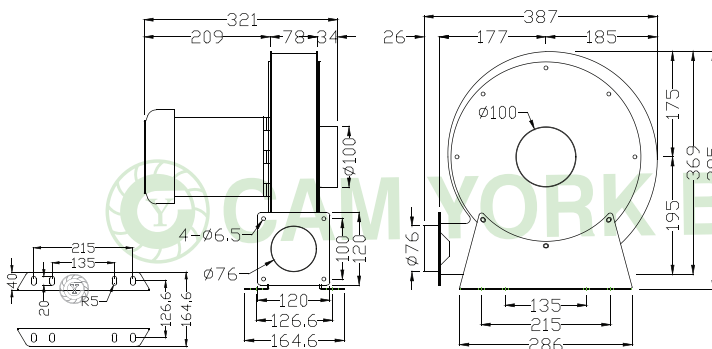


CYT250

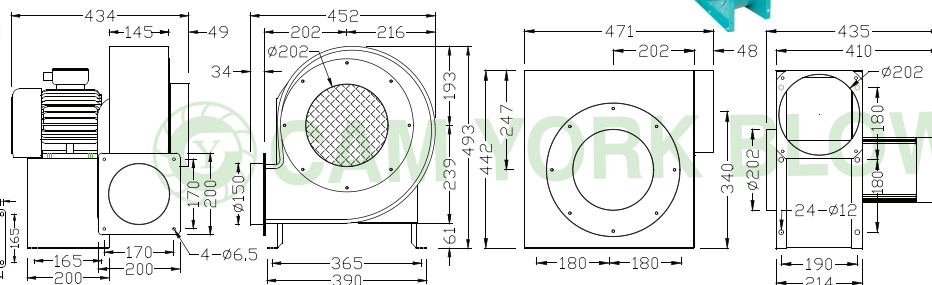
[illegible]

CYT Series (Backward Curved Impeller) 後傾式

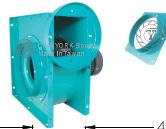
CYT275



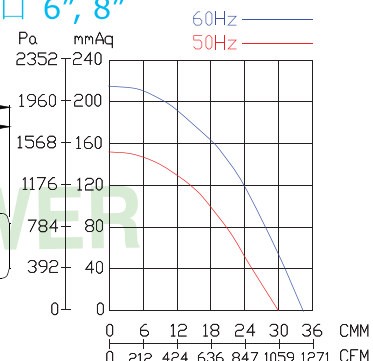
CYT285 入口 6", 8" 10"



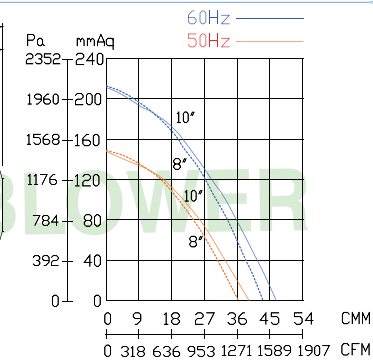
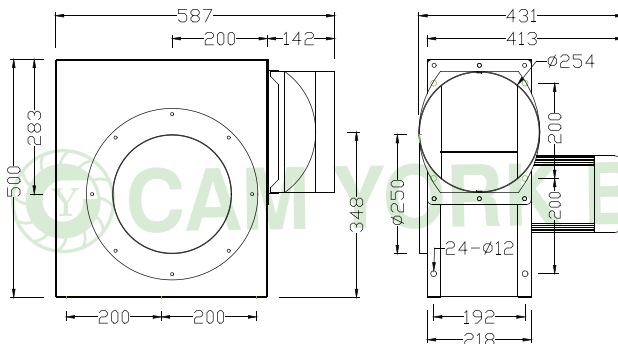
CYST285



出入口 6", 8"

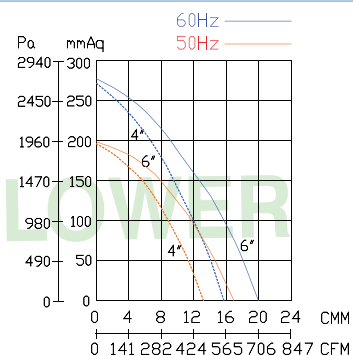
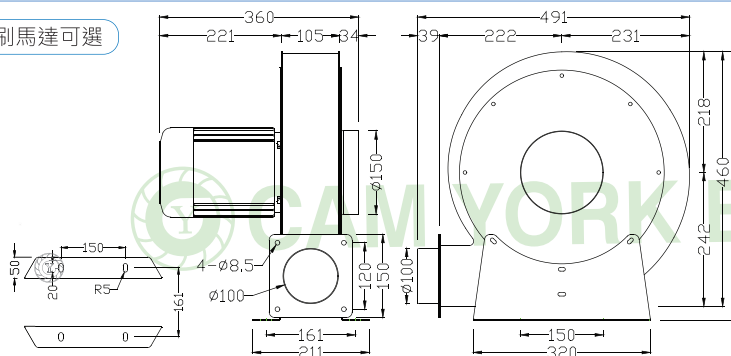


CYST300 有DC無刷馬達可選



Inlet / Outlet 出入口 8" ,10"

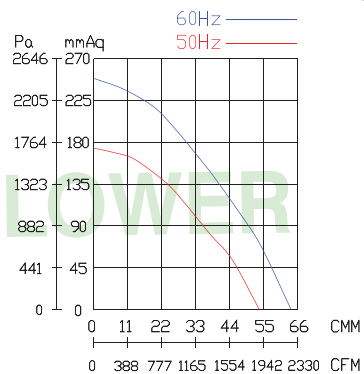
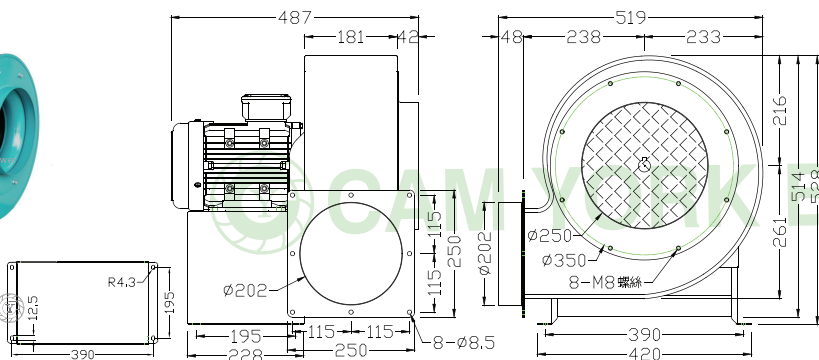
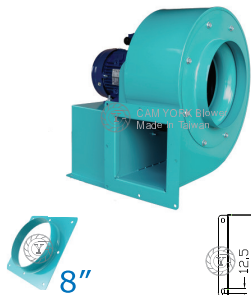
CYT325 有DC無刷馬達可選



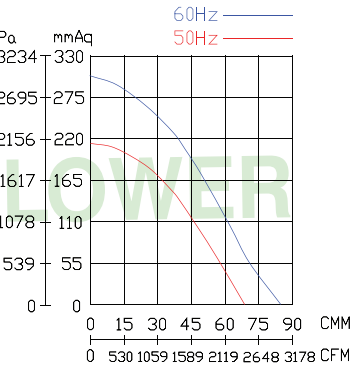
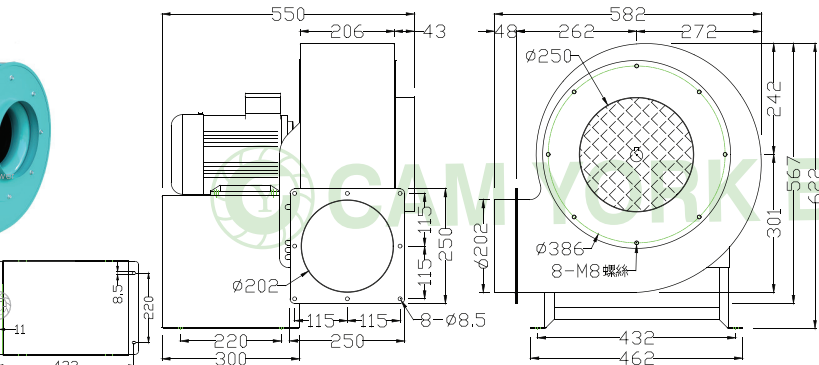
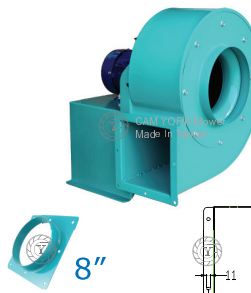
型號	電壓	頻率	相數	極數	電流	馬力	轉速	最大風量			最大靜壓			重量
Model	Rated Voltage	Frequency	Phase	Pole	Current	Power	Speed	Max. Air Flow			Max. Pressure			Weight
	V	Hz	Ø	P	A	Watt / HP	R.P.M.	CMM	CMH	CFM	mmAq	inchAq	Pa	KG
CYT275	110/220	50	1	2	4 / 2	1/2 HP	2900	9.5	570	335	154	6.06	1510	16.5
		60			5.3 / 2.6		3360	11	660	388	216	8.50	2118	
	220/380	50	3		2.2 / 1.4		2900	9.5	570	335	154	6.06	1510	
		60			2 / 1.15		3360	11	660	388	216	8.50	2118	
CYT285	110/220	50	1	2	7.6 / 3.8	1 HP	2900	30	1800	1059	152	5.98	1491	29
		60			9.4 / 4.7		3500	35	2100	1236	216	8.50	2118	
	220/380	50	3		2.2 / 1.3		2900	30	1800	1059	152	5.98	1491	
		60			3 / 1.8		3500	35	2100	1236	216	8.50	2118	
CYST300 10吋入口 10吋出口	110/220	50	1	2	8.4 / 4.2	1 HP	2880	39.8	2388	1405	144	5.67	1412	27
		60			9 / 4.5		3350	46.3	2778	1634	205	8.07	2010	
	220/380	50	3		2.3 / 1.3		2954	39.3	2358	1387	146	5.75	1432	
		60			2.9 / 1.7		2485	46.6	2796	1645	208	8.19	2040	
CYST300	8吋入 8吋出	50 / 60 Hz ==> Max air flow : 36 / 43 CMM, Max. Pressure: 146/208 mmAq												
CYT325	220	50	1	2	5	1 HP	2830	17.3	1038	611	198	7.80	1942	17
	6"入 4"出	60			6.3		3270	20	1200	706	274	10.79	2687	
	220	50	1		4.6		2850	13.5	810	477	197	7.76	1932	
	4"入 4"出	60			5.5		3300	15.75	945	556	268	10.55	2628	

CYT Series (Backward Curved Impeller) 後傾式

CYT320

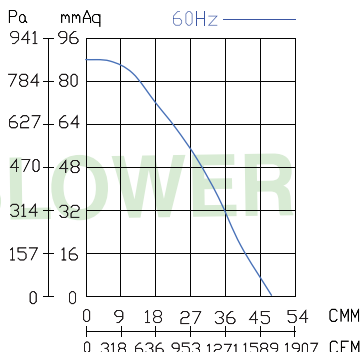
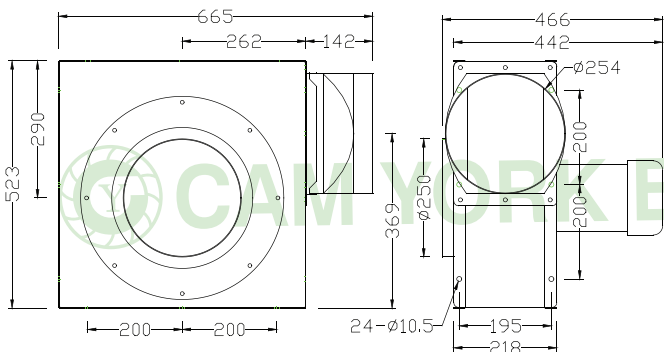


CYT350

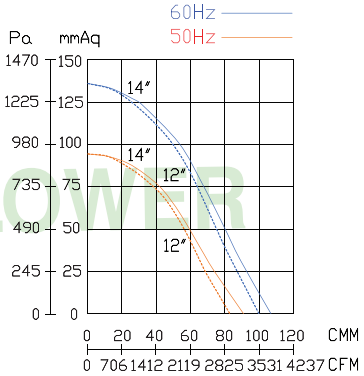
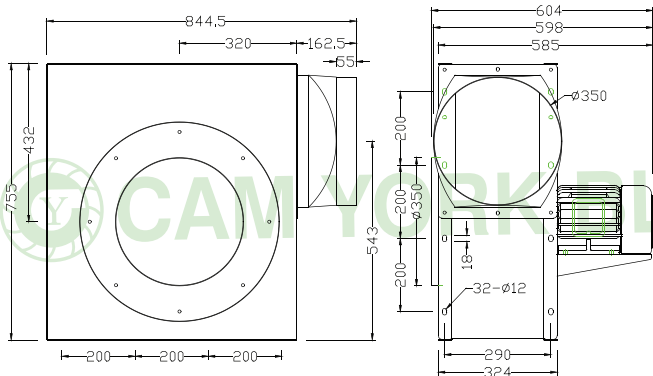


CYST410 -4P

有DC無刷馬達可選



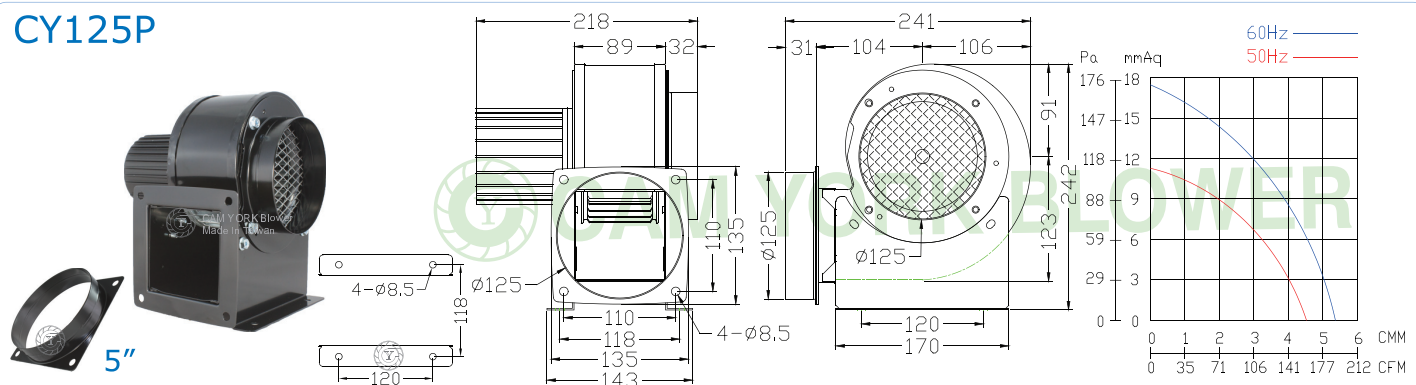
CYST450 -4P



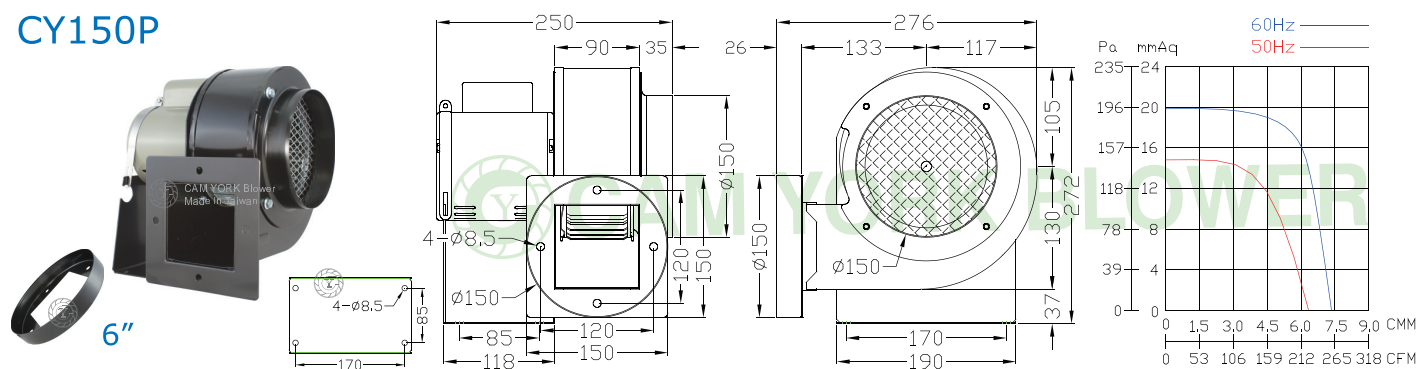
型號	電壓	頻率	相數	極數	電流	馬力	轉速	最大風量			最大靜壓			重量
Model	Rated Voltage	Frequency	Phase	Pole	Current	Power	Speed	Max. Air Flow			Max. Pressure			Weight
	V	Hz	Ø	P	A	Watt / HP	R.P.M.	CMM	CMH	CFM	mmAq	inchAq	Pa	KG
CYT320	220	50	1	2	6.6	2 HP	2950	54	3240	1906	174	6.85	1706	42
		60			8.8		3450	63	3780	2224	250	9.84	2452	
	220/380	50	3		4.4 / 2.5		2950	54	3240	1906	174	6.85	1706	37
		60			5.4 / 3.1		3500	64	3840	2259	250	9.84	2452	
CYT350	220/380	50	3	2	5.5 / 3.3	3 HP	2900	69	4140	2436	214	8.43	2099	43
		60			8.1/4.5		3400	85	5100	3001	304	11.97	2981	
CYST410	110/220	60	1	4	8 / 4	1 HP	1740	48	2880	1694	88	3.46	863	30
CYST450 12吋入 12吋出	220/380	50	3	4	5.6 / 3.3	2 HP	1460	83	4980	2930	93	3.66	912	
		60			6 / 3.5		1720	100	6000	3530	134	5.28	1314	
CYST450 14吋入 14吋出		50			5.6 / 3.3		1460	91	5460	3212	93	3.66	912	
		60			6 / 3.5		1720	107	6420	3777	134	5.28	1314	

P & PV Series (4 Pole & 6 Pole)

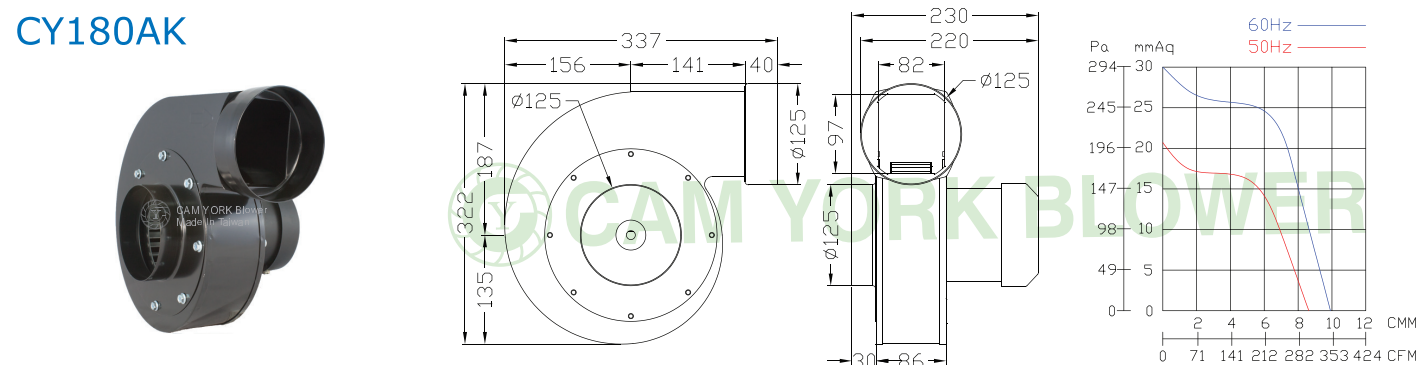
CY125P



CY150P



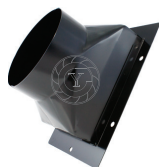
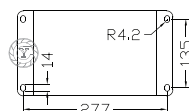
CY180AK



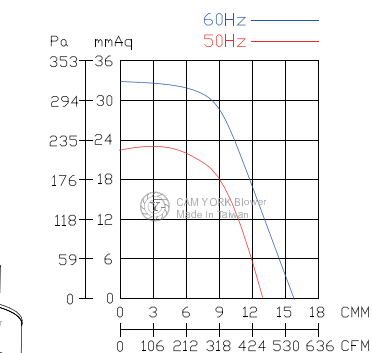
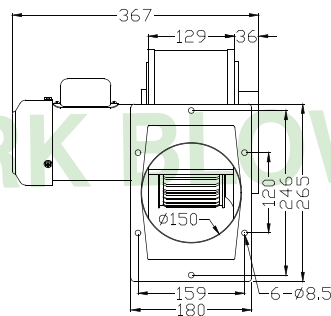
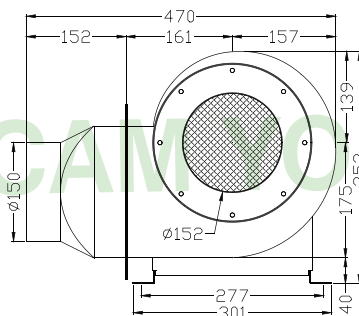
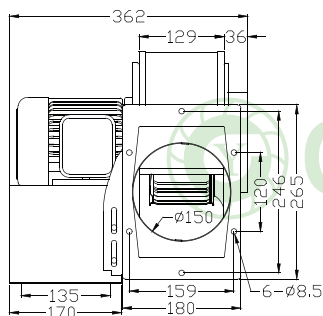
型號	電壓	頻率	相數	極數	電流	馬力	轉速	最大風量			最大靜壓			重量
Model	Rated Voltage	Frequency	Phase	Pole	Current	Power	Speed	Max. Air Flow			Max. Pressure			Weight
	V	Hz	Ø	P	A	Watt / HP	R.P.M.	CMM	CMH	CFM	mmAq	inchAq	Pa	KG
CY 125P	110/220	50	1	4	0.7 / 0.3	30 W	1400	4.5	270	159	11.1	0.44	109	6.1
		60			0.6 / 0.3		1700	5.3	318	187	17.3	0.68	170	
CY 150P	110/220	50	1	4	1.5 / 0.8	1/10 HP	1450	6.2	372	219	14.5	0.57	142	6.2
		60			1.2 / 0.6		1720	7.4	444	261	20	0.79	196	
CY 180AK	110	50	1	4	1.7	90 W	1420	8.4	504	297	21	0.83	206	6.5
		60			1.6		1650	9.8	588	346	30.3	1.19	297	

P & PV Series (4 Pole & 6 Pole)

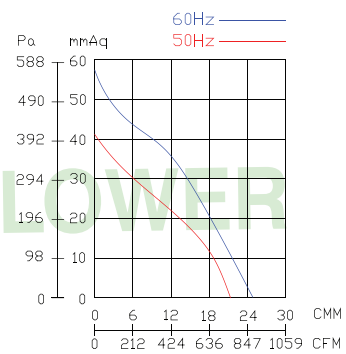
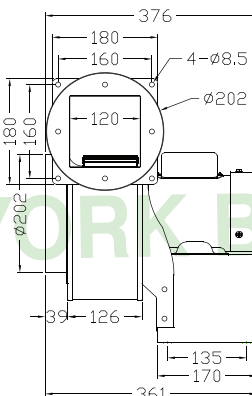
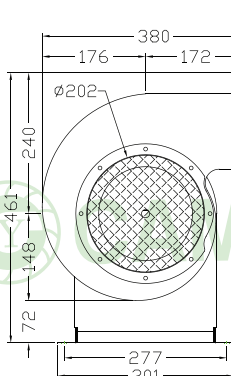
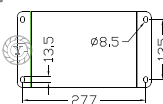
CY190P



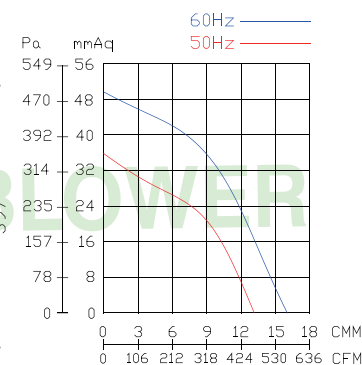
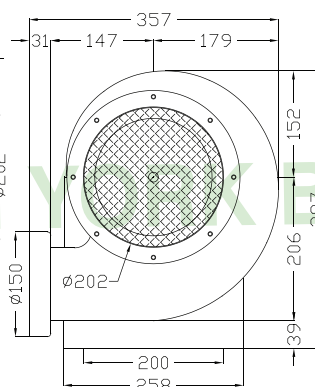
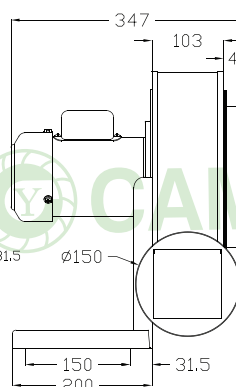
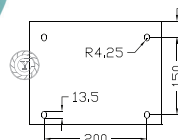
6"
Optional



CY200P



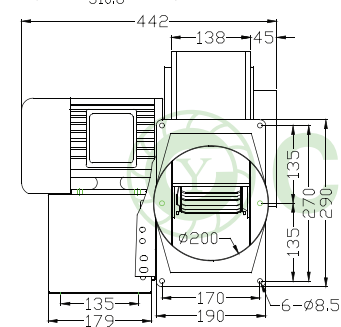
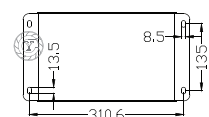
CY210P



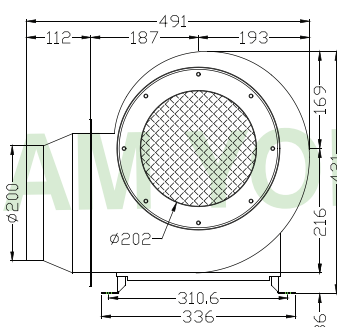
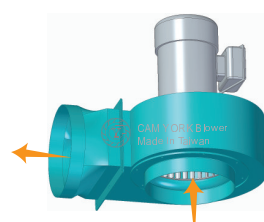
型號	電壓	頻率	相數	極數	電流	馬力	轉速	最大風量			最大靜壓			重量
Model	Rated Voltage	Frequency	Phase	Pole	Current	Power	Speed	Max. Air Flow			Max. Pressure			Weight
	V	Hz	Ø	P	A	Watt / HP	R.P.M.	CMM	CMH	CFM	mmAq	inchAq	Pa	KG
CY190P	110/220	50	1	4	2.7 / 1.4	1/4 HP	1460	12.5	750	441	23.3	0.92	229	16.5
		60			2.5 / 1.3		1720	15.3	918	540	33.5	1.32	329	
CY190PV	220/380	50	3	4	1 / 0.6	1/4 HP	1460	12.5	750	441	23.3	0.92	229	12.4
		60			1 / 0.6		1720	15.3	918	540	33.5	1.32	329	
CY200P	110/220	50	1	4	4 / 2	1/3 HP	1470	21.3	1278	752	41	1.61	402	14.5
		60			4 / 2		1740	24.7	1482	872	58	2.28	569	
CY210P	110/220	50	1	4	3 / 1.5	1/4 HP	1460	13.7	822	484	34.5	1.36	338	13.3
		60			3 / 1.5		1710	16.3	978	575	50.8	2.00	498	

P & PV Series (4 Pole & 6 Pole)

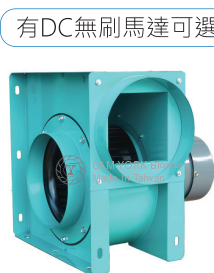
CY230P



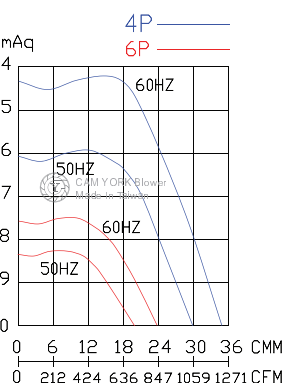
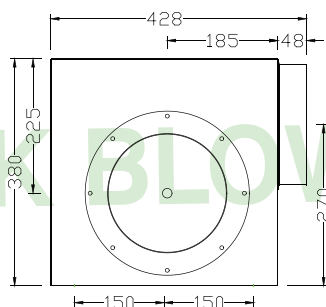
CY230PV



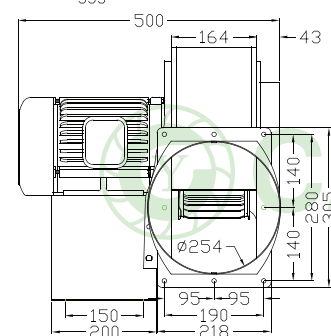
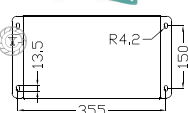
CYS232



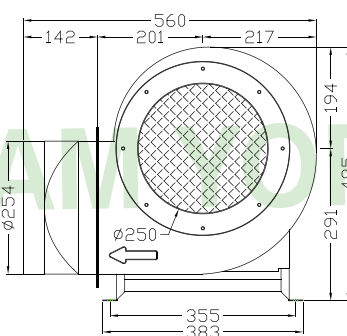
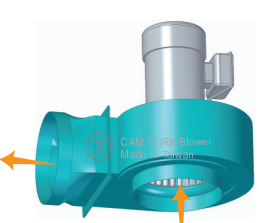
有DC無刷馬達可選



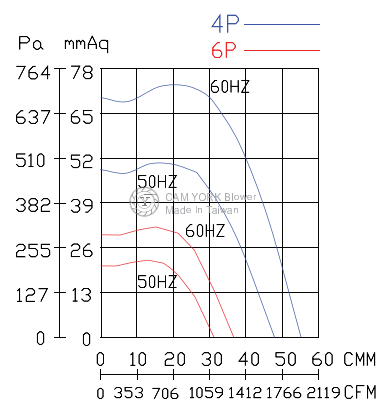
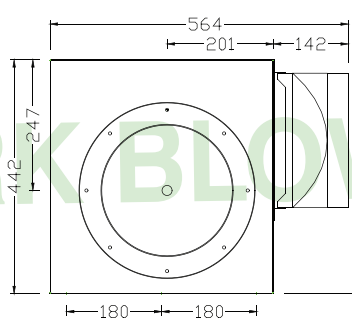
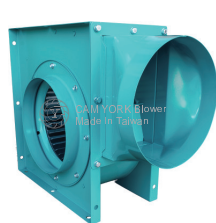
CY270P



CY270V



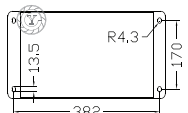
CYS270



型號	電壓	頻率	相數	極數	電流	馬力	轉速	最大風量			最大靜壓			重量
Model	Rated Voltage	Frequency	Phase	Pole	Current	Power	Speed	Max. Air Flow			Max. Pressure			Weight
	V	Hz	Ø	P	A	Watt / HP	R.P.M.	CMM	m3/hour	CFM	mmAq	inchAq	Pa	KG
CY230P	110/220	50	1	4	5.2 / 2.6	1/2 HP	1450	30	1800	1059	35	1.38	343	20
		60			7.4 / 3.7		1650	34	2040	1200	50.5	1.99	495	
	220/380	50	3		2.3 / 1.4		1450	30	1800	1059	35	1.38	343	15.2
		60			2.4 / 1.4		1650	34	2040	1200	50.5	1.99	495	
CY230PV	110/220	50	1	6	3.6 / 1.8	1/4 HP	980	20	1200	706	15	0.59	147	17
		60			3 / 1.6		1150	24	1440	847	22	0.87	216	
CY270P	110/220	50	1	4	12.6 / 6.3	1 HP	1450	48	2880	1694	48	1.9	471	25
		60			15.6 / 7.8		1700	55	3300	1942	68	2.7	667	
	220/380	50	3		3.2 / 1.9		1450	48	2880	1694	48	1.89	471	
		60			4.0 / 2.3		1700	55	3300	1942	68	2.68	667	
CY270PV	110/220	50	1	6	5.6 / 2.8	1/2 HP	960	31.2	1872	1101	20.5	0.8	201	21.7
		60			6 / 3.0		1130	36.5	2190	1288	30	1.2	294	

P & PV Series (4 Pole & 6 Pole)

CY310P

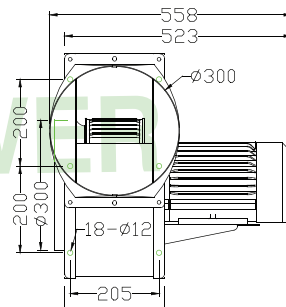
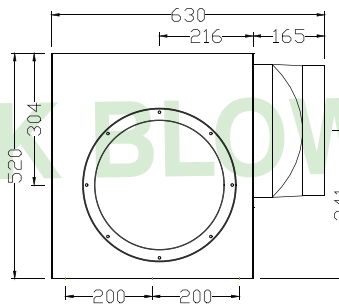
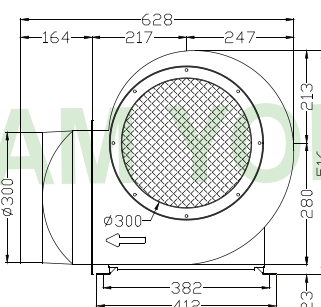
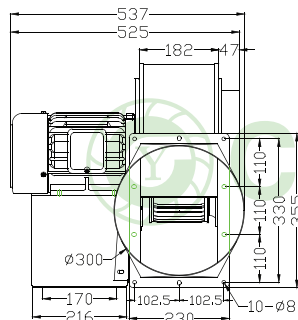
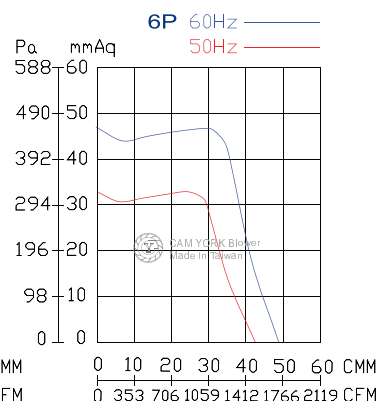
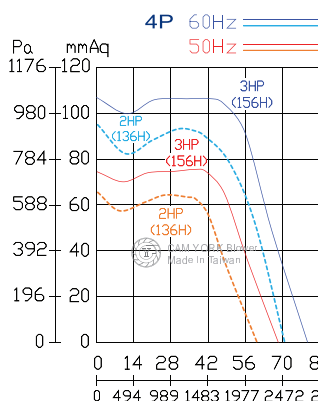


CY310V



Optional

CYS310



CY350P

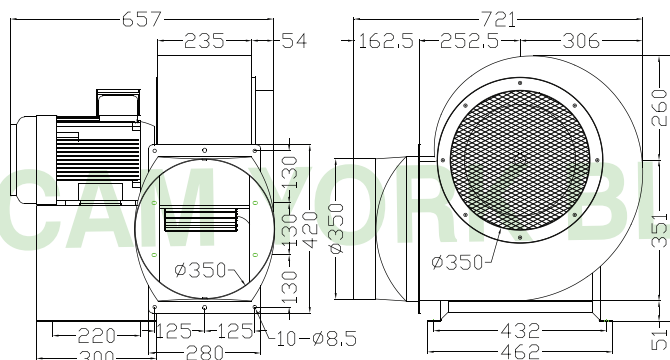
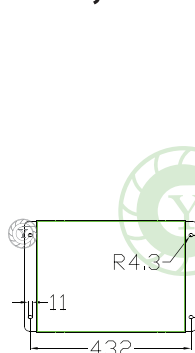
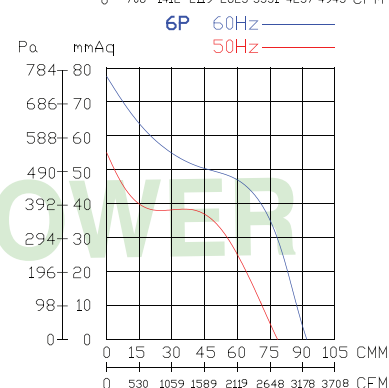
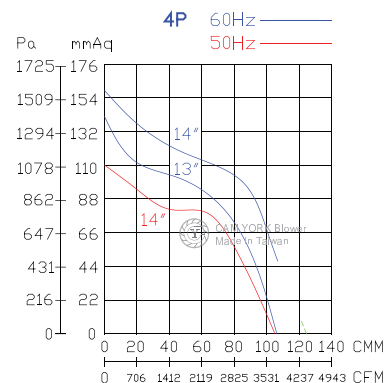


14"

Optional



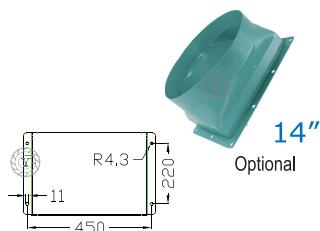
2HP , 6Pole
5HP , 4Pole



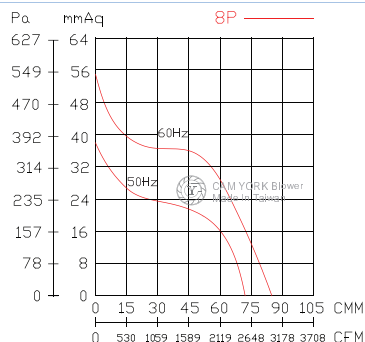
型號	電壓	頻率	相數	極數	電流	馬力	轉速	最大風量			最大靜壓			重量
Model	Rated Voltage	Frequency	Phase	Pole	Current	Power	Speed	Max. Air Flow			Max. Pressure			Weight
	V	Hz	Ø	P	A	Watt / HP	R.P.M.	CMM	CMH	CFM	mmAq	inchAq	Pa	KG
CY310P	220	50	1	4	8	2 HP	1450	56	3360	1977	68	2.68	667	42
		60			11.5		1720	67	4020	2365	100	3.94	981	
	220/380	50	3		5.9 / 3.3		1450	60	3600	2118	65	2.56	637	
		60			7 / 4.1		1710	70	4200	2471	94	3.70	922	
CY310PV	220/380	50	3		7.3 / 4.3	1450	68	4080	2400	73	2.87	716	49	
		60			8.5 / 4.8	1710	80	4800	2824	104	4.09	1020		
	110/220	50	1	7.5 /3.8	970	43	2580	1518	33	1.30	324	39		
		60		9.4 /4.8	1150	51	3060	1800	47	1.85	461			
CY350P	220/380	50	3	4	13 / 8	5 HP	1460	105	6300	3707	110	4.33	1079	75
		60			14.2 / 8.3	5HP-14"	1700	124	7440	4377	158	6.22	1550	
		60			13.2 / 7.6A	5HP-13"	1750	106	6360	3742	140	5.51	1373	
		50	6	6.2 / 3.6	2 HP	960	78	4680	2753	53	2.09	520	73	
		60		7.2 / 4.1		1100	92	5520	3248	74	2.91	726		

P & PV Series (4 Pole & 6 Pole)

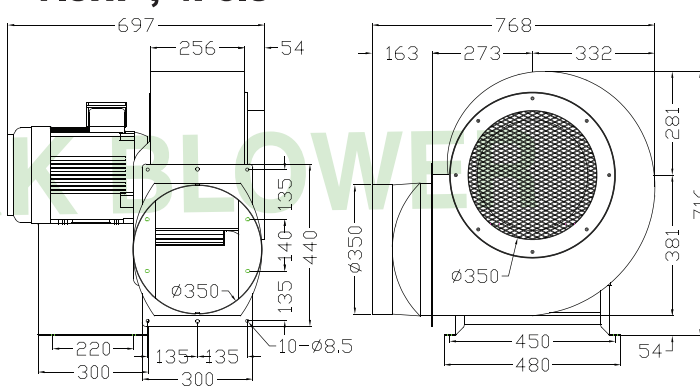
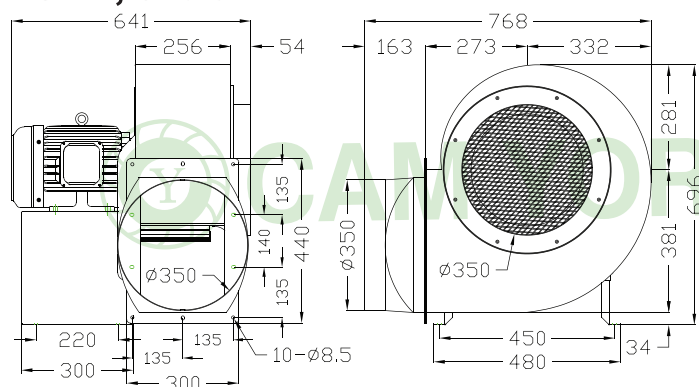
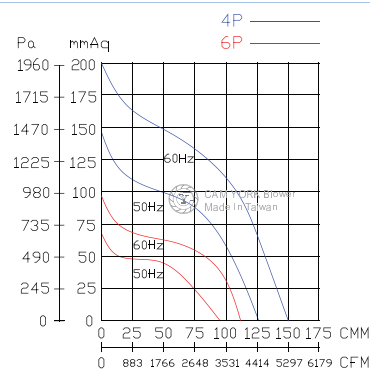
CY380P



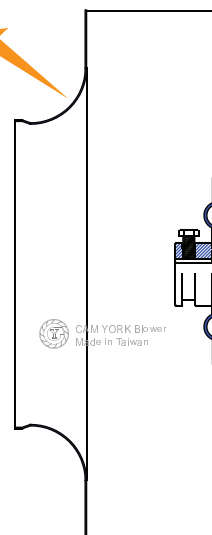
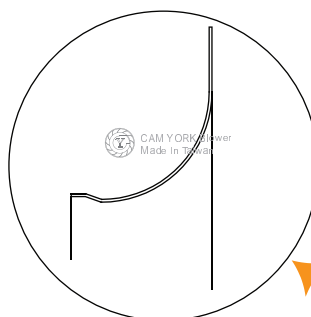
2HP , 8Pole
3HP , 6Pole



7.5HP , 4Pole



Fan wheel special design 風輪特殊入口優化設計

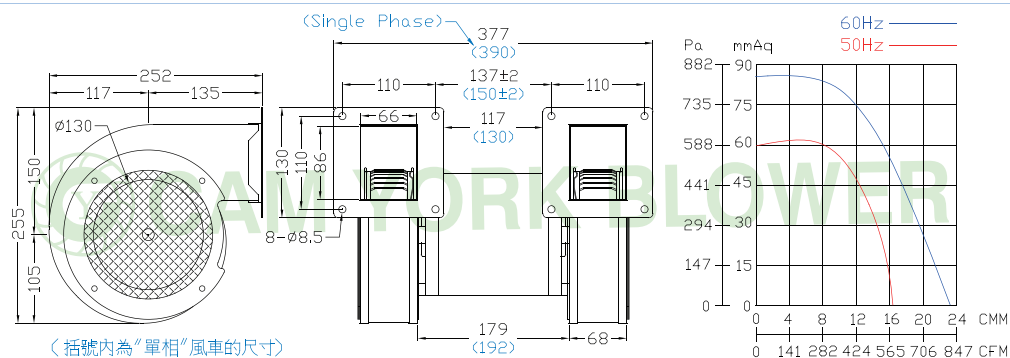


型號	電壓	頻率	相數	極數	電流	馬力	轉速	最大風量			最大靜壓			重量
Model	Rated Voltage	Frequency	Phase	Pole	Current	Power	Speed	Max. Air Flow			Max. Pressure			Weight
	V	Hz	Ø	P	A	Watt / HP	R.P.M.	CMM	CMH	CFM	mmAq	inchAq	Pa	KG
CY380P	220/380	50	3	4	14.5 / 8.5	7.5 HP	1470	126	7560	4448	146	5.75	1432	85
		60		4	20.7 / 12.5		1755	150	9000	5295	210	8.27	2059	
		50		6	7.1 / 4.1	3 HP	975	95	5700	3354	67	2.64	657	70
		60		6	9.1 / 5.1		1145	111	6660	3918	97	3.82	951	
		50		8	7.3 / 4.1	2 HP	740	72	4320	2542	38	1.50	373	90
		60		8	6.5 / 3.7		885	85	5100	3001	55	2.17	539	

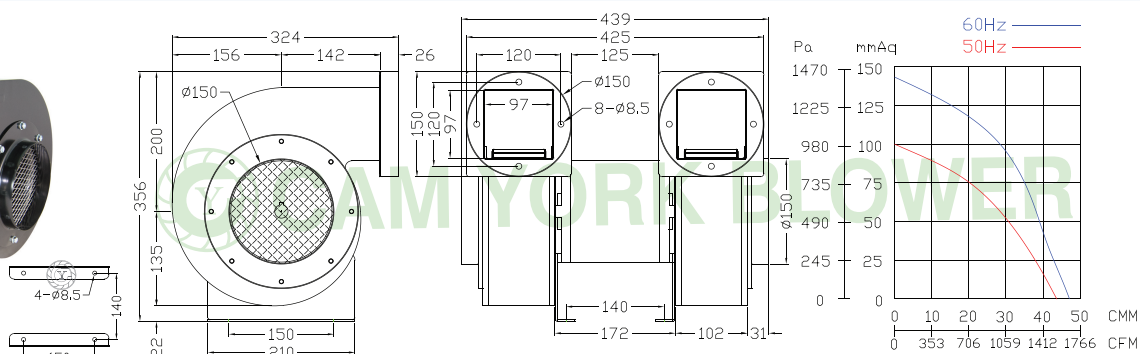
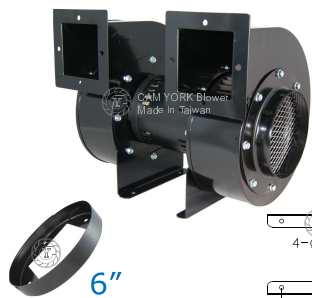


M Series

CY150M

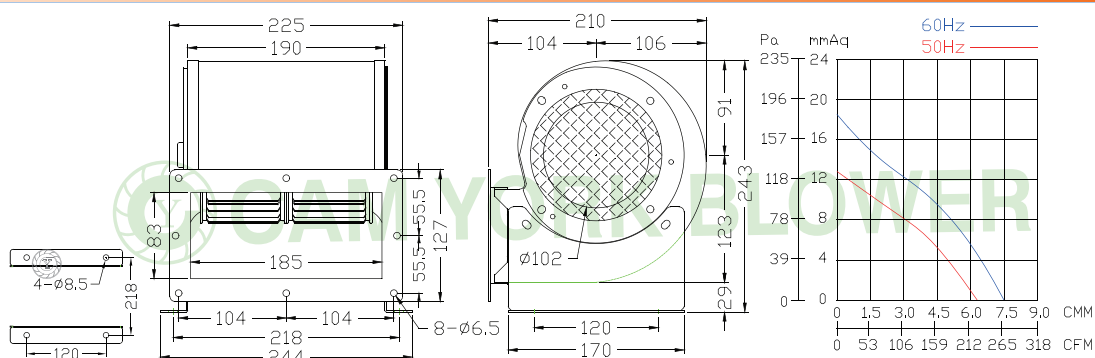


CY180M

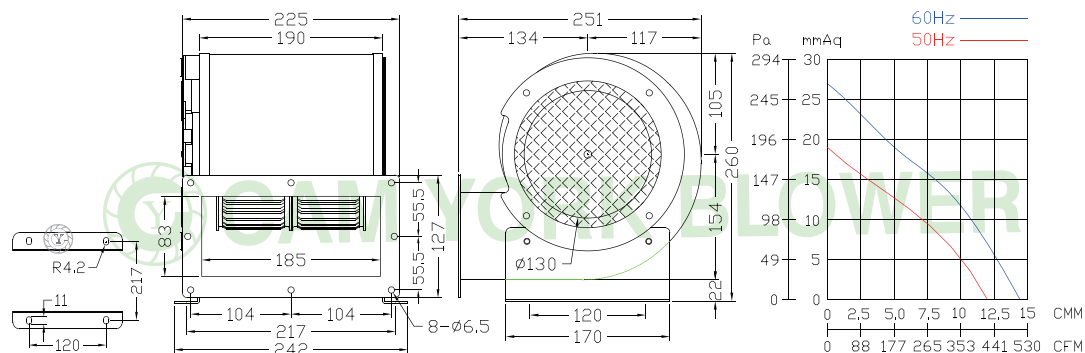


DM Series

CY125DM

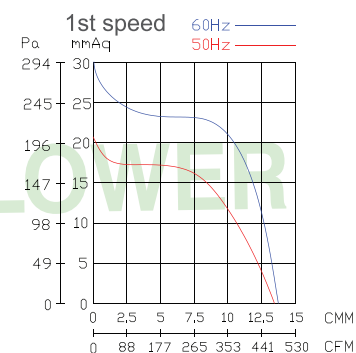
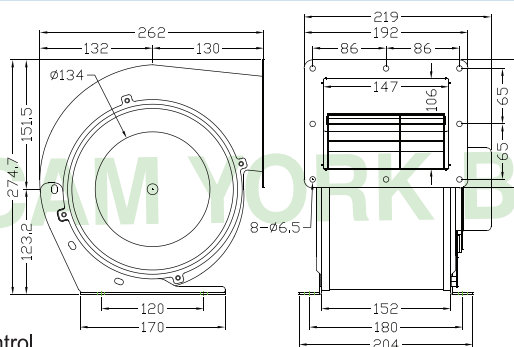


CY150DM



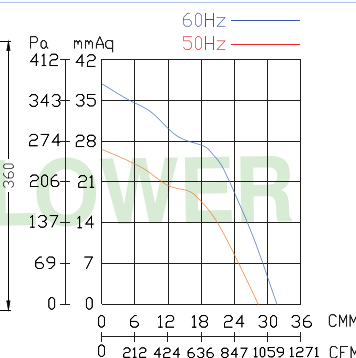
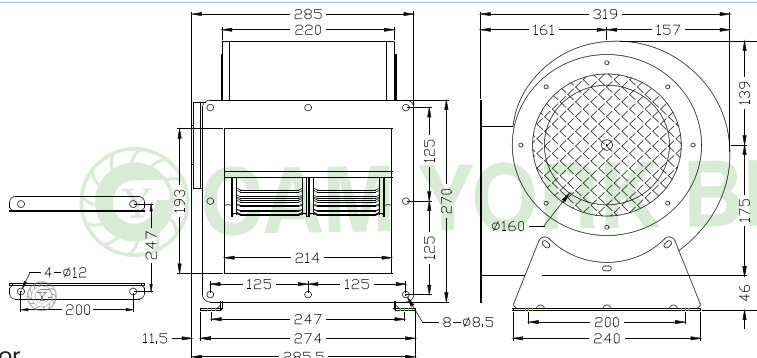
型號	電壓	頻率	相數	極數	電流	馬力	轉速	最大風量			最大靜壓			重量
Model	Rated Voltage	Frequency	Phase	Pole	Current	Power	Speed	Max. Air Flow			Max. Pressure			Weight
	V	Hz	Ø	P	A	Watt / HP	R.P.M.	CMM	CMH	CFM	mmAq	inchAq	Pa	KG
CY 150M	110/220	50	1	2	5.0 / 2.5	3/4 HP	2900	17.6	1056	621	60	2.36	588	13
		60			7.6 / 3.8		3450	23	1380	812	85	3.35	834	
	220/380	50	3	2.5 / 1.5	2900		17.6	1056	621	60	2.36	588		
		60		2.6 / 1.5	3450		23	1380	812	85	3.35	834		
CY 180M	220/380	50	3	2	4.4 / 2.5	1.5 HP	2900	43	2580	1518	100	3.94	981	19
		60			6.0 / 3.5		3300	48.7	2922	1719	143	5.63	1402	
CY 125DM	110/220	50	1	4	0.8 / 0.4	70 W	1330	6.3	378	222	12.8	0.50	126	4.7
		60			0.7 / 0.4		1600	7.5	450	265	18.5	0.73	181	
CY 150DM	110/220	50	1	4	1.6/0.8	110 W	1400	12	720	424	19	0.75	186	5.5
		60			1.5/0.8		1600	14.4	864	508	27	1.06	265	

CY178DM



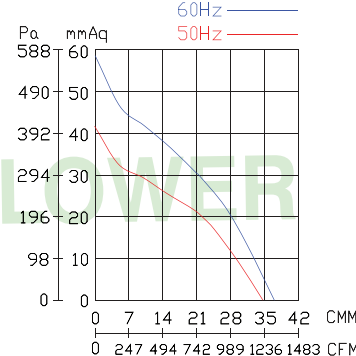
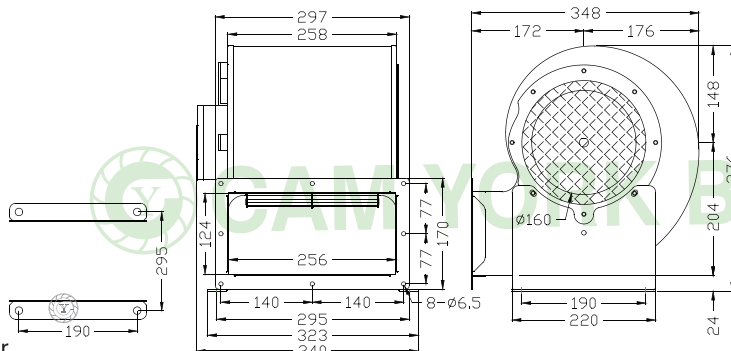
- 可變換3速/可遙控 // 3 Speed motor / Remote Control

CY190DM



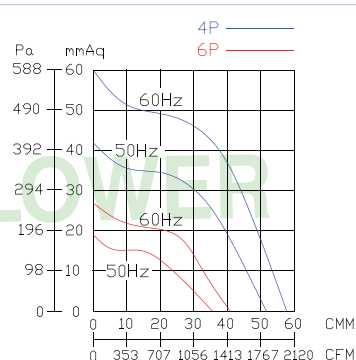
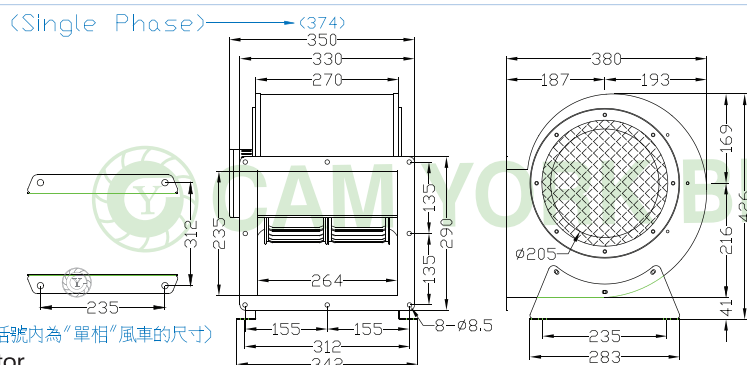
- 可變換3速/3 Speed motor

CY200DM



- 可變換3速/3 Speed motor

CY230DM



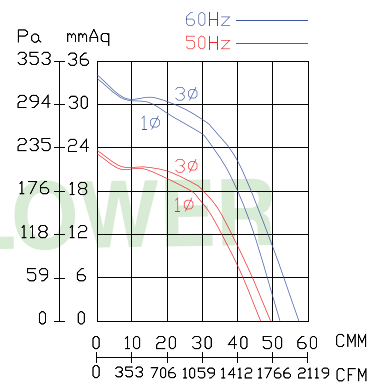
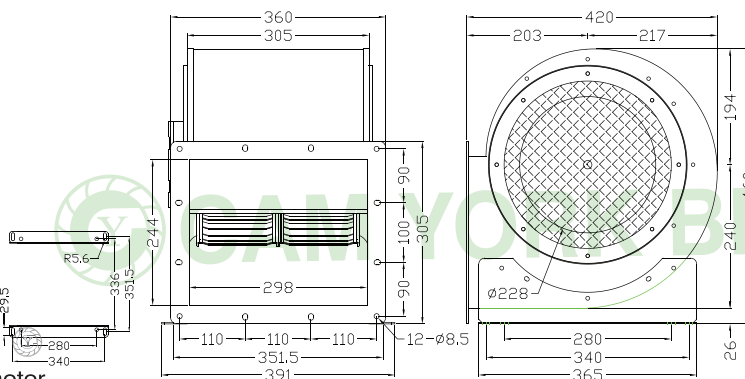
- 可變換3速/3 Speed motor

型號	電壓	頻率	相數	極數	電流	馬力	轉速	最大風量			最大靜壓			重量
Model	Rated Voltage	Frequency	Phase	Pole	Current	Power	Speed	Max. Air Flow			Max. Pressure			Weight
	V	Hz	Ø	P	A	Watt / HP	R.P.M.	CMM	CMH	CFM	mmAq	inchAq	Pa	KG
CY178DM	110/220	50	1	4	1.3 / 0.7	75 W	1150	13.4	804	473	21.4	0.84	210	5.3
		60			1.6 / 0.8		1170	13.6	816	480	30	1.18	294	
CY190DM	110/220	50	1	4	4.0 / 2.0	420 W	1400	28.5	1710	1006	27	1.06	265	11
		60			5.0 / 2.5		1550	31.5	1890	1112	38	1.50	373	
	220/380	50	3	4	1.3 / 0.7		1400	28.5	1710	1006	27	1.06	265	
		60			1.4 / 0.8		1550	31.5	1890	1112	38	1.50	373	
CY200DM	110/220	50	1	4	4.5 / 2.3	420 W	1300	35	2100	1236	42	1.65	412	12
		60			6.5 / 3.5		1430	37	2220	1306	59	2.32	579	
	220/380	50	3	4	1.6 / 0.9		1300	35	2100	1236	42	1.65	412	
		60			2.0 / 1.2		1430	37	2220	1306	59	2.32	579	
CY230DM	220	50	1	4	3.7	550 W	1400	52	3120	1836	42	1.65	412	19
		60			5.5		1600	58	3480	2047	60	2.36	588	
	220/380	50	3	4	3 / 1.7		1400	52	3120	1836	42	1.65	412	15
		60			4 / 2.3		1600	58	3480	2047	60	2.36	588	
	110/220	50	1	6	3.3 / 1.7	400 W	900	36	2160	1271	19	0.75	186	14.2
		60			4.1 / 2.3		1100	41	2460	1447	27	1.06	265	

CY270DM



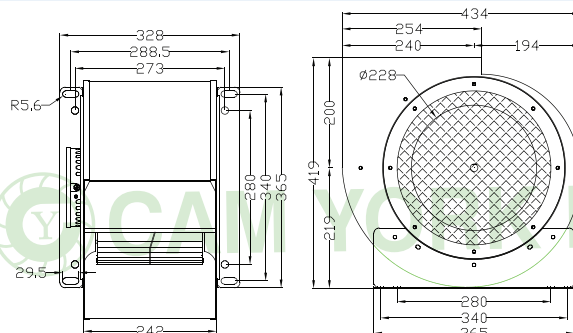
- 可變換3速/3 Speed motor



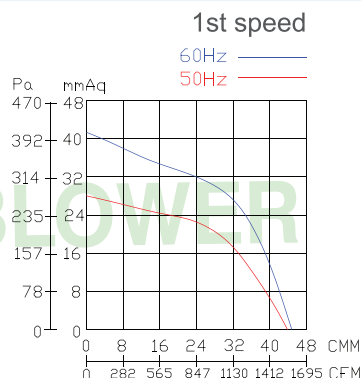
CY275DM



- 可變換3速/3 Speed motor



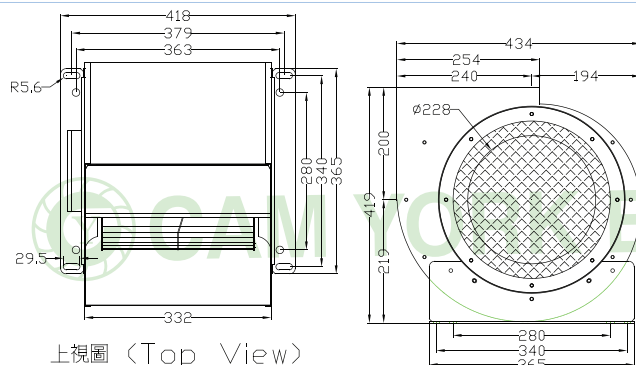
上視圖 (Top View)



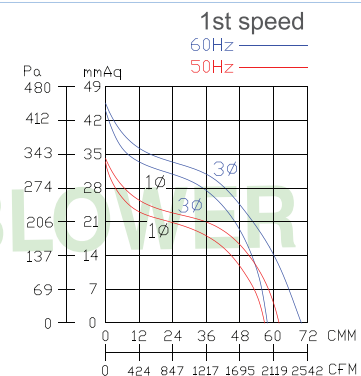
CY280DM



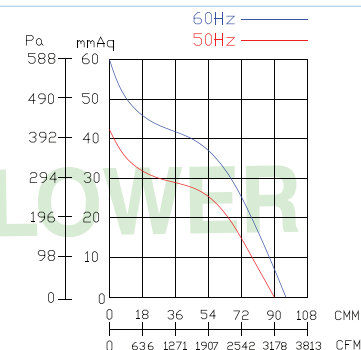
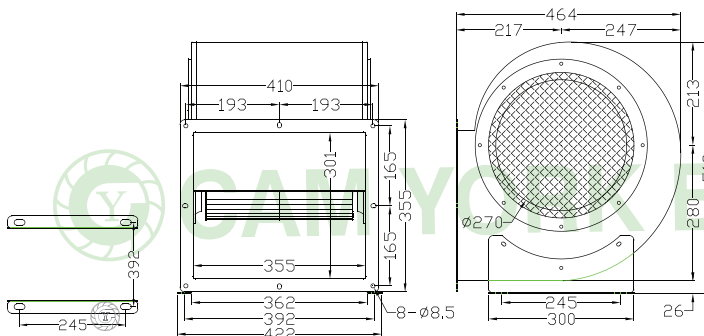
- 可變換3速/3 Speed motor



上視圖 (Top View)

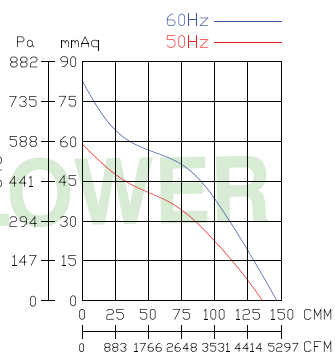
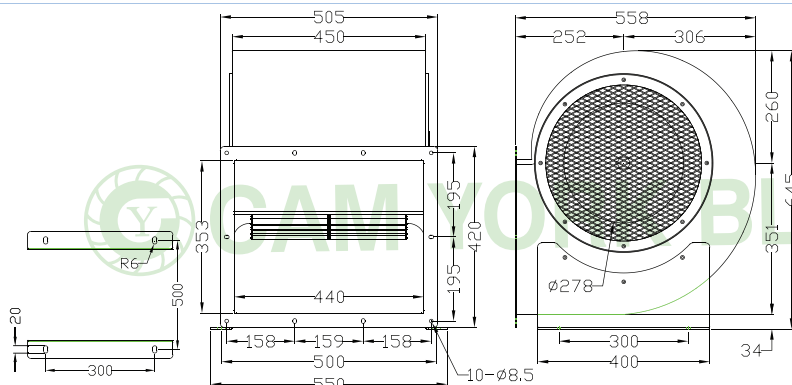


CY310DM



型號	電壓	頻率	相數	極數	電流	馬力	轉速	最大風量			最大靜壓			重量
Model	Rated Voltage	Frequency	Phase	Pole	Current	Power	Speed	Max. Air Flow			Max. Pressure			Weight
	V	Hz	Ø	P	A	Watt / HP	R.P.M.	CMM	CMH	CFM	mmAq	inchAq	Pa	KG
CY270DM	110/220	50	1	6	5.5 / 2.4	3/4 HP	920	47	2820	1659	23	0.91	226	22
		60			6.8 / 3.2		1020	52	3120	1836	34	1.34	333	
	220/380	50	3		3.5 / 1.9		950	49	2940	1730	23	0.91	226	
		60			3 / 1.8		1100	57	3420	2012	34	1.34	333	
CY275DM	110/220	50	1	6	6 / 2.6	1/2 HP	860	44	2640	1553	30	1.18	294	17
		60			7 / 3.2		880	44.5	2670	1571	43	1.69	422	
CY280DM	110/220	50	1	6	6.5 / 3.0	3/4 HP	880	57.8	3468	2040	35	1.38	343	20
		60			8 / 4		885	58	3480	2047	45	1.77	441	
	220/380	50	3		3.7 / 2		940	62	3720	2189	35	1.38	343	18.5
		60			4 / 2.3		1050	69	4140	2436	45	1.77	441	
CY310DM	220/380	50	3	6	4 / 2.4	700 W	900	90	5400	3177	42	1.65	412	26.7
		60			5.6 / 3.1		970	96	5760	3389	60	2.36	588	

CY350DM

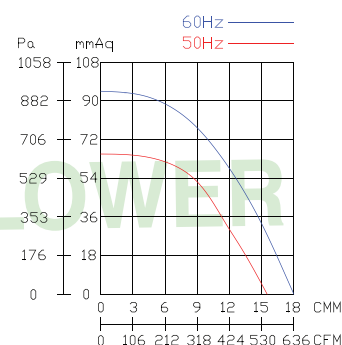
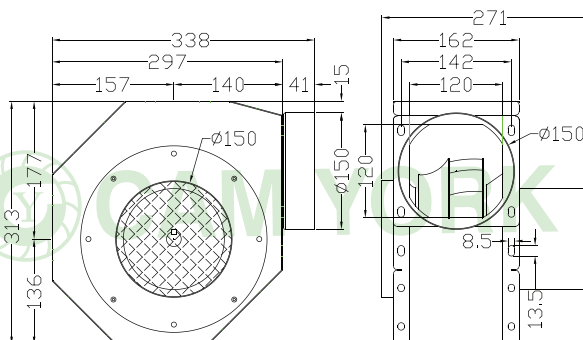


CYS Series

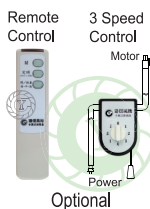
CYS190



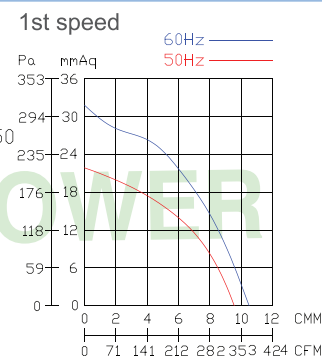
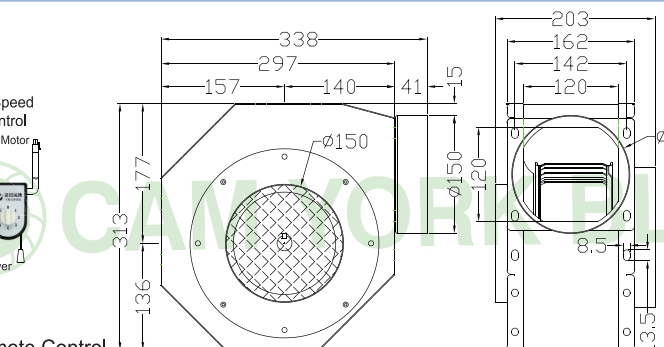
- 可變換2速 / 2 Speed motor available



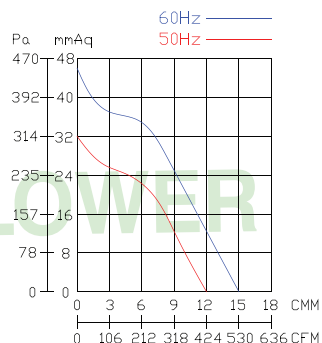
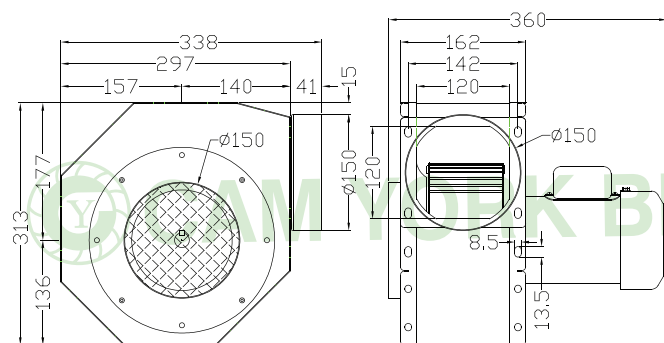
CYS193



- 可變換3速/可遙控 // 3 Speed motor / Remote Control



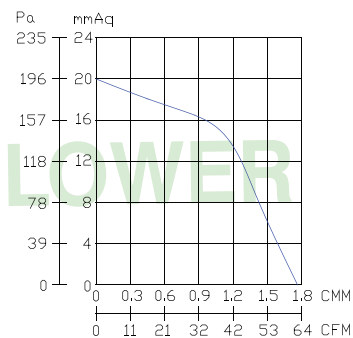
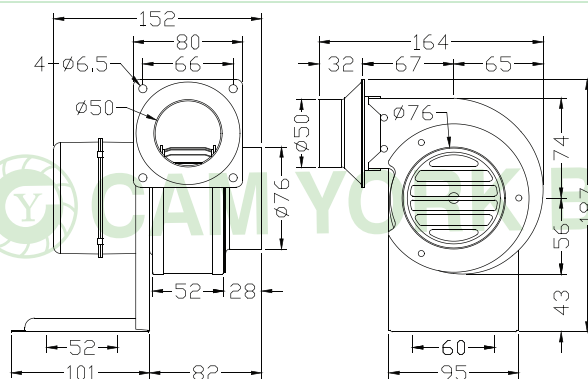
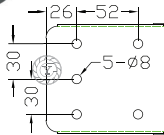
CYS195



型號	電壓	頻率	相數	極數	電流	馬力	轉速	最大風量			最大靜壓			重量
Model	Rated Voltage	Frequency	Phase	Pole	Current	Power	Speed	Max. Air Flow			Max. Pressure			Weight
	V	Hz	Ø	P	A	Watt / HP	R.P.M.	CMM	CMH	CFM	mmAq	inchAq	Pa	KG
CY350DM	220/380	50	3	6	8 / 4.8	2 HP	920	132	7920	4660	59	2.32	579	48
		60			11.3 / 6.2		1000	146	8760	5154	83	3.27	814	
CYS190	110/220	50	1	2	3.8 / 1.9	1/2 HP	2900	15.5	930	547	66	2.60	647	10.4
		60			4.4 / 2.2		3400	18	1080	635	94	3.70	922	
CYS193	110/220	50	1	4	1.1 / 0.6	75 W	1300	9.5	570	335	22	0.87	216	5.7
		60			1.4 / 0.7		1450	10.5	630	371	32	1.26	314	
CYS195	110/220	50	1	4	3 / 1.5	1/4 HP	1460	12	720	424	32	1.26	314	11.4
		60			2.5 / 1.25		1720	15	900	530	46	1.81	451	

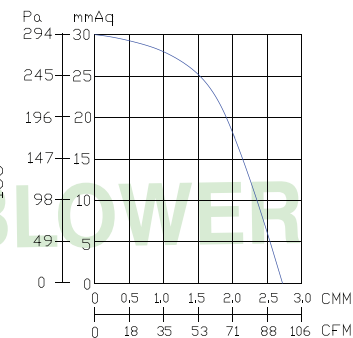
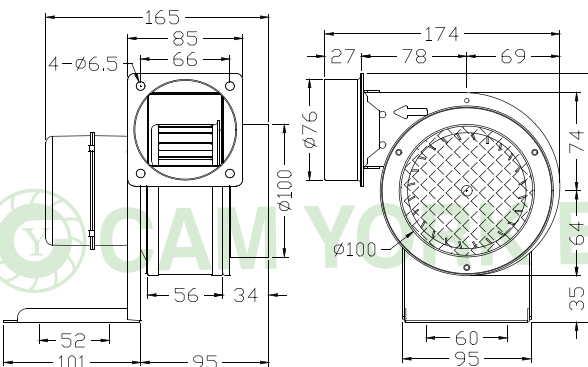
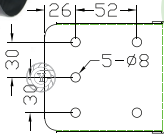
CY076DC

Brushless



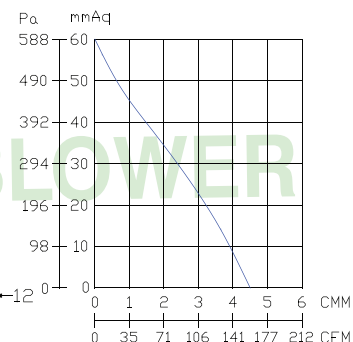
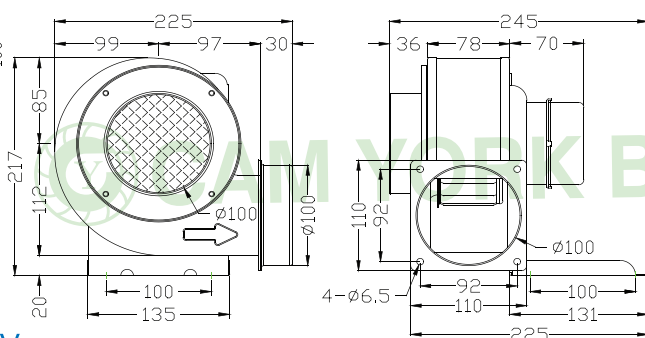
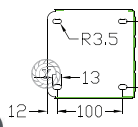
CY100DC

Brushless



CY120EC

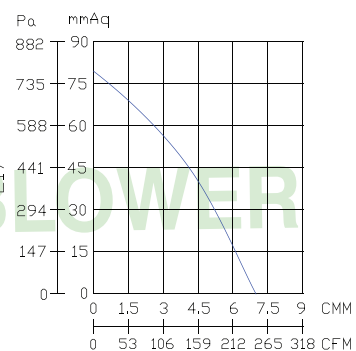
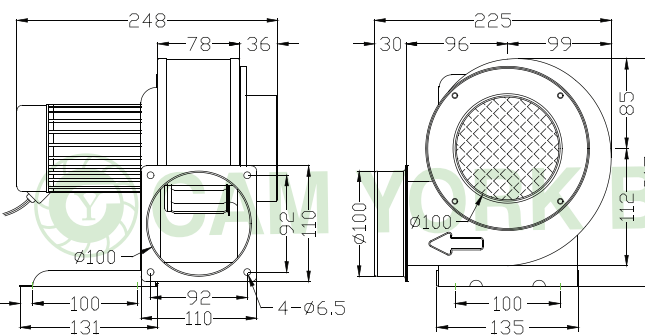
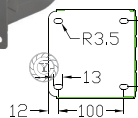
Brushless



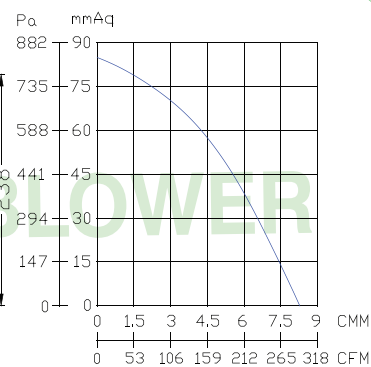
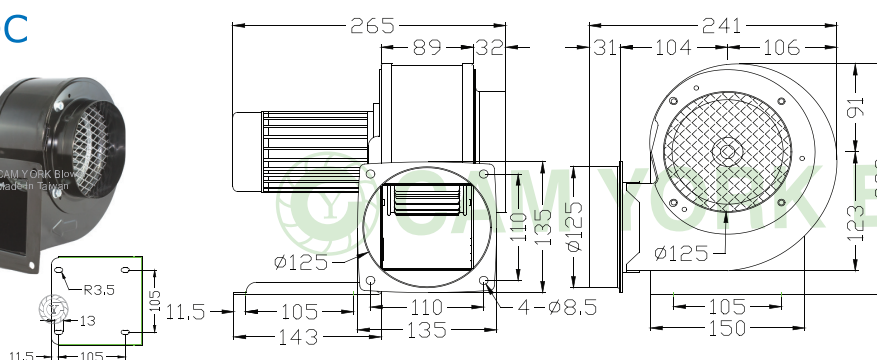
Input:DC24V or AC110V/220V

CY120DC-3500

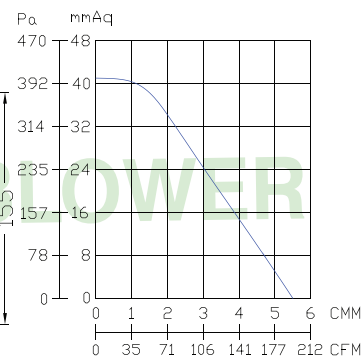
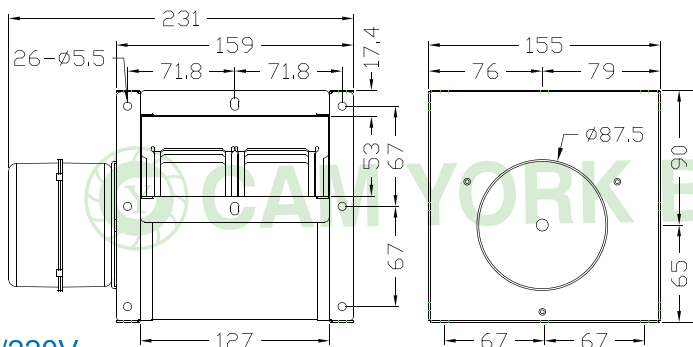
Brushless



型號	電壓	電流	轉速	最大風量			最大靜壓			重量
Model	Rated Voltage	Current	Speed	Max. Air Flow			Max. Pressure			Weight
	V	A	R.P.M.	CMM	CMH	CFM	mmAq	inchAq	Pa	KG
CY076DC	24	1.7	3700	1.7	102	60	20	0.79	196	1.7
CY100DC	24	2.2	3350	2.7	162	95	30	1.18	294	1.9
CY120EC	DC 24	2.2	2300	4.5	270	159	60	2.36	588	2.5
	AC 110 / 220	0.85 / 0.5								
CY120DC-3500	24	5.6	3500	7	420	247	78	3.07	765	3.2



Brushless



Input:DC24V or AC110V/220V

型號	電壓	電流	轉速	最大風量			最大靜壓			重量
Model	Rated Voltage	Current	Speed	Max. Air Flow			Max. Pressure			Weight
	V	A	R.P.M.	CMM	CMH	CFM	mmAq	inchAq	Pa	KG
CY125DC	24	9	3500	8.4	504	297	86	3.39	843	4.3
CY100DMEC	24	2.2	2500	5.5	330	194	41	1.61	402	2.0

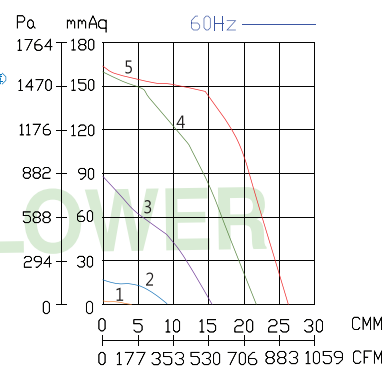
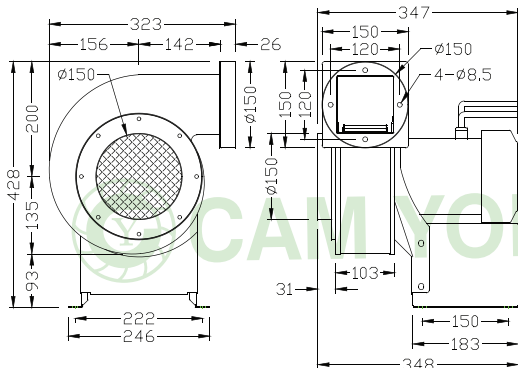
更新訊息
請參閱網站



氣墊拱門用



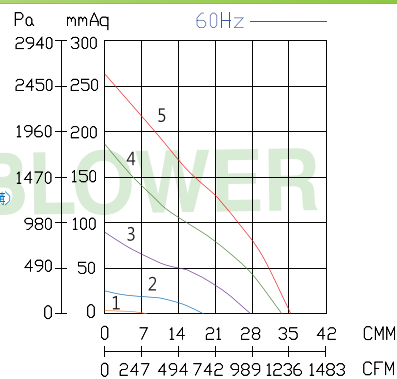
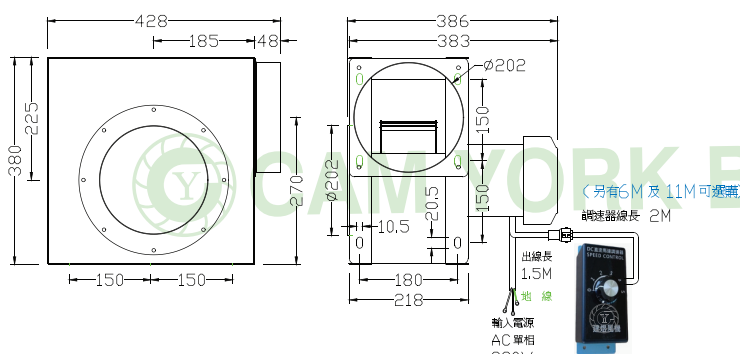
CY180AEC



型號	馬力	電壓	頻率	入風口	出風口	旋鈕調速	電流	耗電	最大風量			最大靜壓			重量
Model	Power	Rated Voltage	Frequency	Inlet	Outlet	Speed	Current	Input Power	Max. Air Flow			Max. Pressure			Weight
		V	Hz				A	W	CMM	CMH	CFM	mmAq	inchAq	Pa	KG
CY 180AEC	970W	220	50/60	6" (15cm)	1	0.18	12	4	240	141	3	0.12	29	13	
					2	0.63	74	9	540	318	16	0.63	157		
					3	2	270	16	960	565	86	3.39	843		
					4	4.4	622	22	1320	777	156	6.14	1530		
					5	7.3	1097	26	1560	918	160	6.30	1569		

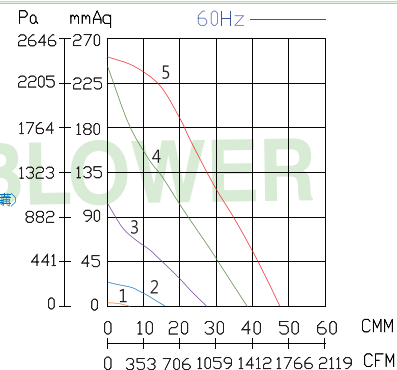
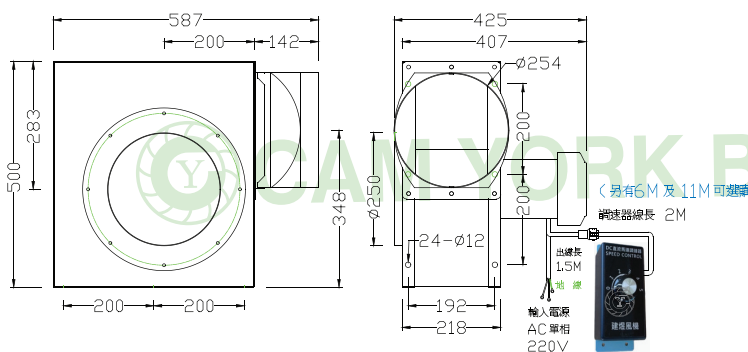
CYS232AEC

Brushless



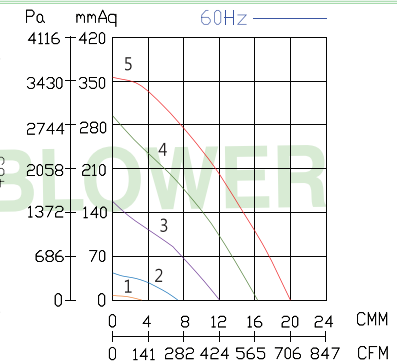
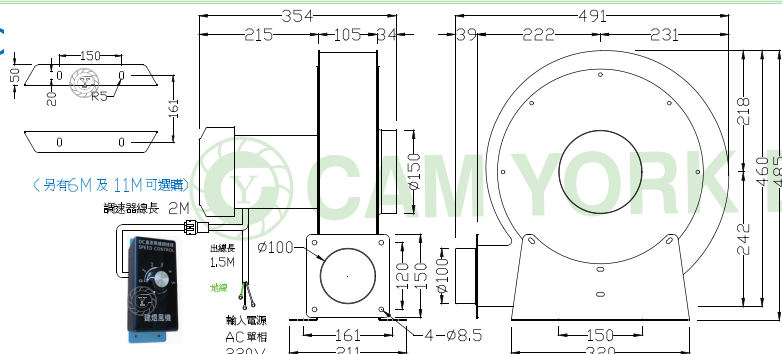
CYST300AEC

Brushless



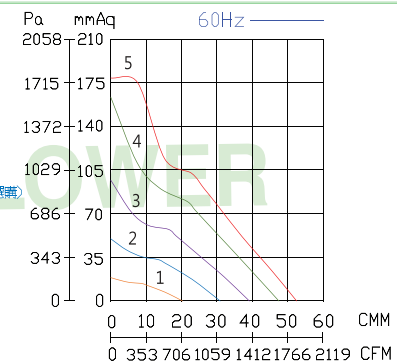
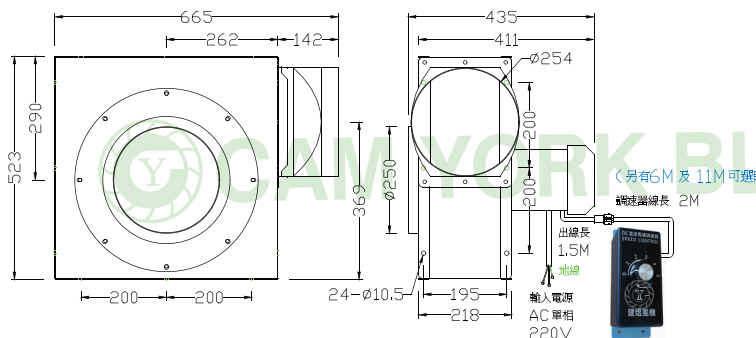
CYT325AEC

Brushless



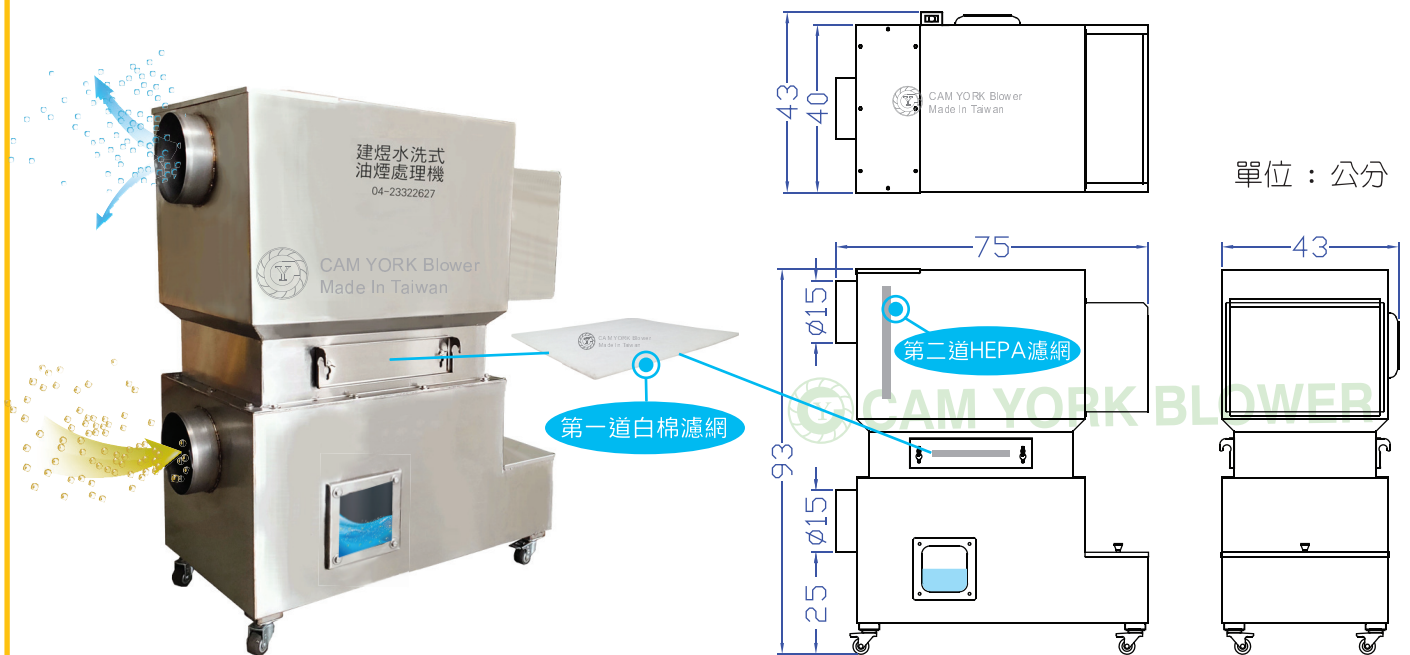
CYST410AEC

Brushless



型號	馬力	電壓	頻率	入風口	出風口	旋鈕調速	電流	耗電	最大風量			最大靜壓			重量
Model	Power	Rated Voltage	Frequency	Inlet	Outlet	Speed	Current	Input Power	Max. Air Flow			Max. Pressure			Weight
		V	Hz				A	W	CMM	CMH	CFM	mmAq	inchAq	Pa	KG
CYS232AEC	970W	220	50/60	8" (20cm)		1	0.25	20	8.0	480	282	3.5	0.14	34	27
						2	1.2	146	18.7	1122	660	25	0.98	245	
						3	3	412	27.5	1650	971	88	3.46	863	
						4	5.1	730	33.5	2010	1183	184	7.24	1804	
						5	6	876	35.2	2112	1243	260	10.24	2550	
CYST300AEC	970W	220	50/60	10" (25cm)		1	0.18	12	6	360	212	3.85	0.15	38	27
						2	0.55	62	15.5	930	547	26	1.02	255	
						3	1.78	227	27.2	1632	960	111.7	4.40	1095	
						4	4.1	570	38.5	2310	1359	244	9.61	2393	
						5	7	1025	47.2	2832	1666	251.3	9.89	2464	
CYT325AEC	970W	220	50/60	6" (15 cm)	4" (10 cm)	1	0.17	11	3.2	189	111	7.4	0.29	73	24
						2	0.6	67	7.2	431	254	42	1.66	412	
						3	1.95	250	12	720	424	156	6.14	1530	
						4	4.22	576	16.3	975	574	292	11.50	2864	
						5	7.14	1032	20	1200	706	355	13.99	3484	
CYST410AEC	1HP	220	50/60	10" (25cm)		1	0.5	58	20	1200	706	19	0.75	186	24
						2	1.3	167	31	1860	1094	50	1.97	490	
						3	2.5	320	40	2400	1412	100	3.94	981	
						4	4	540	48	2880	1694	165	6.50	1618	
						5	5.2	730	53	3180	1871	180	7.09	1765	

CYW250



建議白棉濾網更換時間：
第一道白棉濾網：一個月
第二道HEPA濾網：兩個月



產品特色

- 1.適用於油炸機，早餐店，夜市餐廚，產業機械.
- 2.特殊水洗風道設計，水瀑式洗滌，淨化效果佳.
- 3.白棉濾網設計，低成本，簡易更換.
- 4.內含透浦式風機，風壓大，效果佳.
- 5.白鐵自動補水箱設計，可不需另接水源.
- 6.無泵浦無噴嘴設計，不需再花費保養.
- 7.全機使用SUS304白鐵(風機除外).
- 8.全機百分百台灣製造.
- 9.馬達有溫控保護開關.



規格

- 1.抽風機馬力：1/2HP
- 2.接風管尺寸：6英吋（15公分）
- 3.最大排風量：10CMM
- 4.額定電流：5A
- 5.水箱容量：30公升
- 6.淨重：54kg
- 7.外型尺寸：75公分x43公分x高93公分

多翼式排風扇

CYV400

可接風管，換氣更具彈性，不會直接將廢氣排出影響鄰居
適用於氣窗、神明廳、廚房、
小吃店、地下室等室內場所之換氣。

可接風管

大風量
(700CMH
第一速)

三段風量

溫控保護

無線遙控
定時關機
(選配)

雙滾珠
軸承



產品特色

- 1 搭配三速切換開關，附拉繩設計，調速輕鬆又便利。
- 2 全機金屬輕量化設計，堅固耐用。
- 3 強力工業用電容式馬達，雙滾珠軸承，馬達無聲運轉更持久。
- 4 超強排風量，每小時700CMH，更佳換氣效果。
- 5 高規格安全防護，搭載馬達溫度保護開關裝置，安全有保障。
- 6 可選配三速(強-中-弱)遙控，三段定時關機，操作更EASY。
- 7 全機100%台灣製造，MIT品質有保障。
- 8 馬達可選擇靜音型，提供更舒適靜音的通風環境。

接排風扇

140CM

負壓式排風設計
達到最佳通風效果
常保潔淨空氣

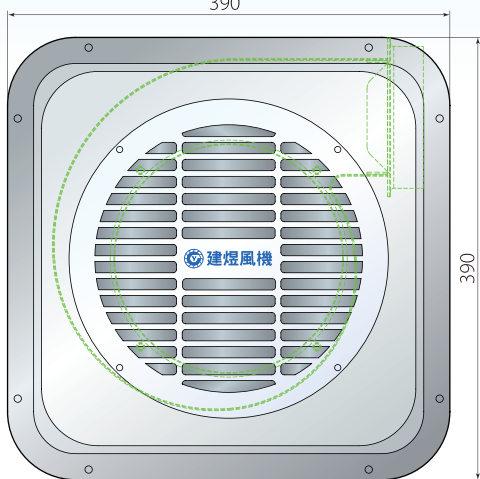
160CM



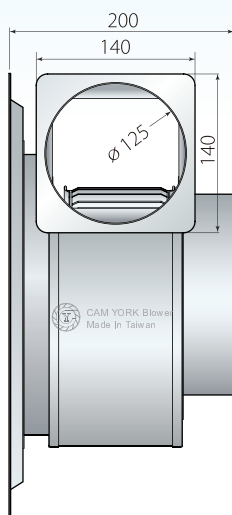
插頭

390

單位:mm



390



200
140

140

φ125

CAM YORK Blower
Made in Taiwan

MODEL		CYV400 通用型		
調速		強	中	弱
電壓	V	110 或 220		
頻率	Hz	60		
最大排風量	CMH	700	480	330
最大靜壓	mmAq	30	28	26
消耗電力	W	143	115	70
噪音	dB	59	52	43
出風口	英吋	5" (125 mm)		
尺寸	mm	400 x 400 x 200		
重量	kg	5.5		



選配項目

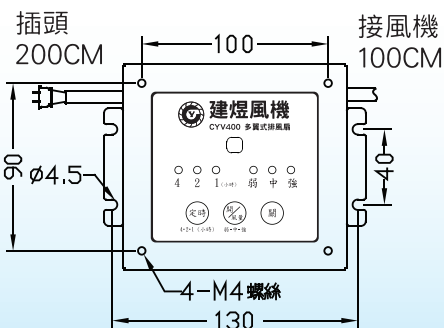


靜音型規格

CYV400		強	中	弱
最大排風量	CMH	500	390	330
最大靜壓	mmAq	16	15	14
消耗電力	W	70	45	35
噪音	dB	52	45	41



無線遙控樣式



插頭
200CM

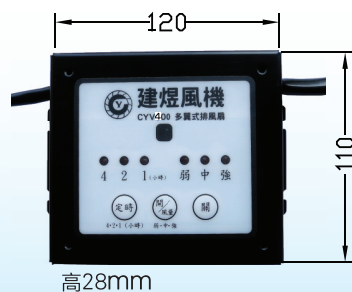
100

接風機
100CM

φ4.5

4-M4螺絲

130



120

高28mm



輕鋼架型

多翼式排風扇

CYV600

產品特色

- 1 多樣選擇，可接風管、排風更具彈性，達到真正換氣效果。
- 2 全機金屬輕量化設計，堅固耐用（面板為 ABS 塑鋼）。
- 3 強力工業用電容式馬達，超強排風，雙滾珠軸承，馬達無聲運轉更持久。
- 4 高規格安全防護，搭載馬達溫度保護開關裝置，安全有保障。
- 5 逆止閥風門設計，可大幅減少髒空氣及異味或蚊蟲竄入。
- 6 紅外線遙控三速，（強 - 中 - 弱）燈號顯示操作更 EASY（可選配三速切換開關）。
- 7 定時關機功能，一小時、兩小時、四小時三段選擇，燈號顯示。
- 8 全機 100% 台灣製造，MIT 品質有保障。

利用負壓式排風設計
達到最佳通風效果
常保潔淨空氣



大風量
(700CMH
第一速)

三段風量

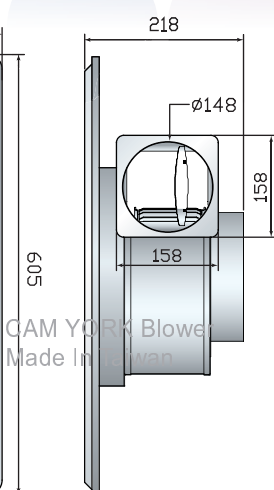
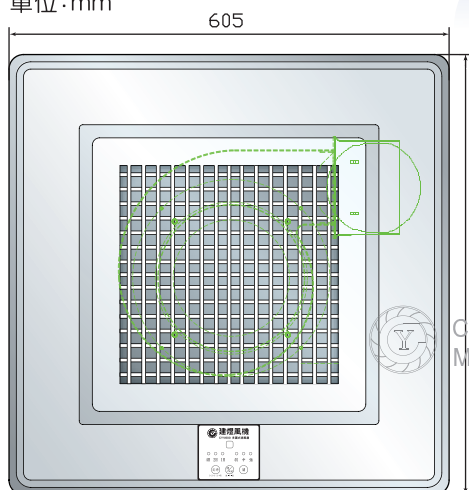
三段定
時關機

金屬材質

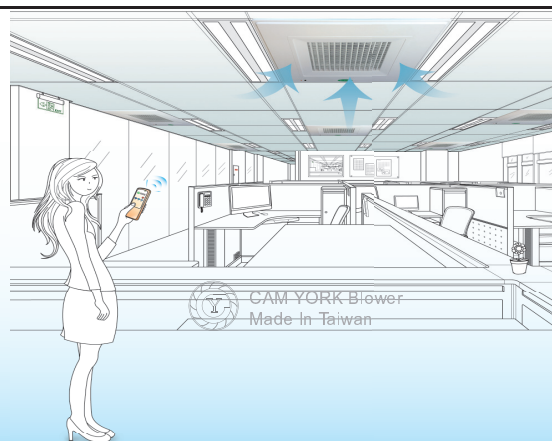
無線遙控

雙滾珠
軸承

單位:mm



MODEL		CYV600 通用型		
調速		強	中	弱
電 壓	V	110 或 220		
頻 率	Hz	60		
最大排風量	CMH	700	480	330
最大靜壓	mmAq	30	28	26
消耗電力	W	148	115	70
噪 音	dB	59	52	43
出 風 口	英吋	6" (148 mm)		
尺 寸	mm	605 x 605 x 220		
重 量	kg	6.2		



選配項目

✓ 標準型規格

✓ 三速切換開關
(附拉繩)

CYV600		強	中	弱
最大排風量	CMH	500	390	330
最大靜壓	mmAq	16	15	14
消耗電力	W	70	45	35
噪 音	dB	52	45	41



CROSS FLOW FAN / 橫流扇

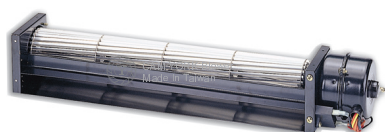
AC shaded pole motor



CRE Series

AC, Shaded pole motor
Single Phase, 2 Pole
Fan Wheel Dia.:030,040,
043,050,060mm

AC capacitor motor



CREC Series

AC capacitor motor
Single Phase, 2 Pole
Outlet in horizontal line
Fan Wheel Dia.:060mm



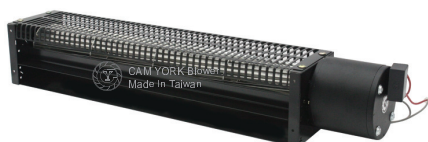
CRVC Series

AC, Capacitor motor
Single Phase, 2Pole
Outlet: 45 degree up
Fan Wheel Dia.:060mm



CRFC Series

AC, Capacitor motor
Single Phase, 4 Pole
Aluminum bar enhanced
Fan Wheel Dia.:060,090,110,150mm



CREP-06042A

AC capacitor motor
Single Phase, 2 Pole
Outlet in horizontal line
Fan Wheel Dia.:060mm



CYH1
1/8HP



CYH1A
1/8HP



CYH2
1/4HP



CYH2B
1/4HP



CYH2C
1/4HP



CYH3
1/2HP



CYH4
1/2HP / 1HP



CYH5
1/2HP



CYH6
1HP



CYH201 / 202
1/2HP / 1HP



CYH8/ CYH9/ CYH10/ CYH11
2HP / 3HP / 5HP / 7.5HP



CYH8L/ CYH9L/ CYH10L
2HP / 3HP / 5HP

用途:

吹塑膠袋, 塑膠印刷機, 分條機, 乾燥機, 吸塵, 製粉, 吸絲, 吸木屑, 電熱送風機, 一般機械之送排風裝置.

IDEAL FOR :

Printing press, Plastic Extruder, Slitting Machine, Drying Oven, Dust Cleaner, Sawdust Remover, Electric Ventilator and Other Ventilating Device uses.



建煜工業股份有限公司

CAM YORK INDUSTRIAL CO., LTD.

41348 台灣台中市霧峰區錦州路308巷9號
No. 9, Ln. 308, Jinzhou Rd., Wufeng Dist.,
Taichung City 41348, TAIWAN
Tel: 886-4-23322627 Fax: 886-4-23322629
Website: <http://www.blower.com.tw>
E-mail: blower-cy@umail.hinet.net

